

# STACBOND

## Architectural Solutions



more than you see





More than facades

Powerhouse Brattørkaia  
Trondheim, Norway



RM House  
Madeira, Portugal





Valley View  
Oslo, Norway



Bizkaia Dorrea | Garellano tower 4  
Bizkaia, Spain





PSG GDAŃSK  
Gdansk, Poland



Veste Zutphen  
Zutphen, Netherlands



Fantoft Stasjon  
Bergen, Norway







# More than a company

STACBOND is a division of STAC, **leader in the composite panel market in Spain**, which develops, produces and markets aluminum composite panels and specific structural components for the architecture, brand image and signage, industry and transport sectors.

For more than 20 years our products have been selected by architects, developers and builders all over the world thanks to their quality, commitment and guarantee.

Our production centers are located in Padrón and El Bierzo, but we have always had a clear vision to grow beyond our borders. Currently, our products offer solutions in more than 80 countries.



Outreach  
**+80** countries



R+D+I  
**6** technical offices



Headquarters  
**8** delegations



Specialization  
**90** engineers



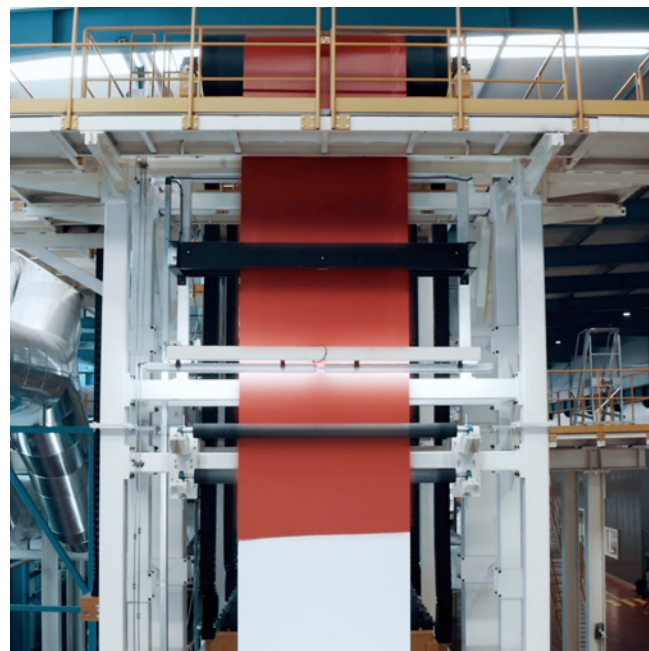
Facilities  
**1 400 000** ft<sup>2</sup>



Staff  
**+600** employees







# The **most advanced and complete** composite panel factory in Europe

For the manufacture of our products, STACBOND has extensive manufacturing and development facilities equipped with the latest technology to ensure quality control and achieve an optimal final product.

With quality as the core of our activity, we develop a comprehensive service backed by continuous investment in R+D and training, as well as a rigorous system of evaluation of our production both internally and externally, endorsed by prestigious international certifying bodies.

**4 CNC  
machining centers**

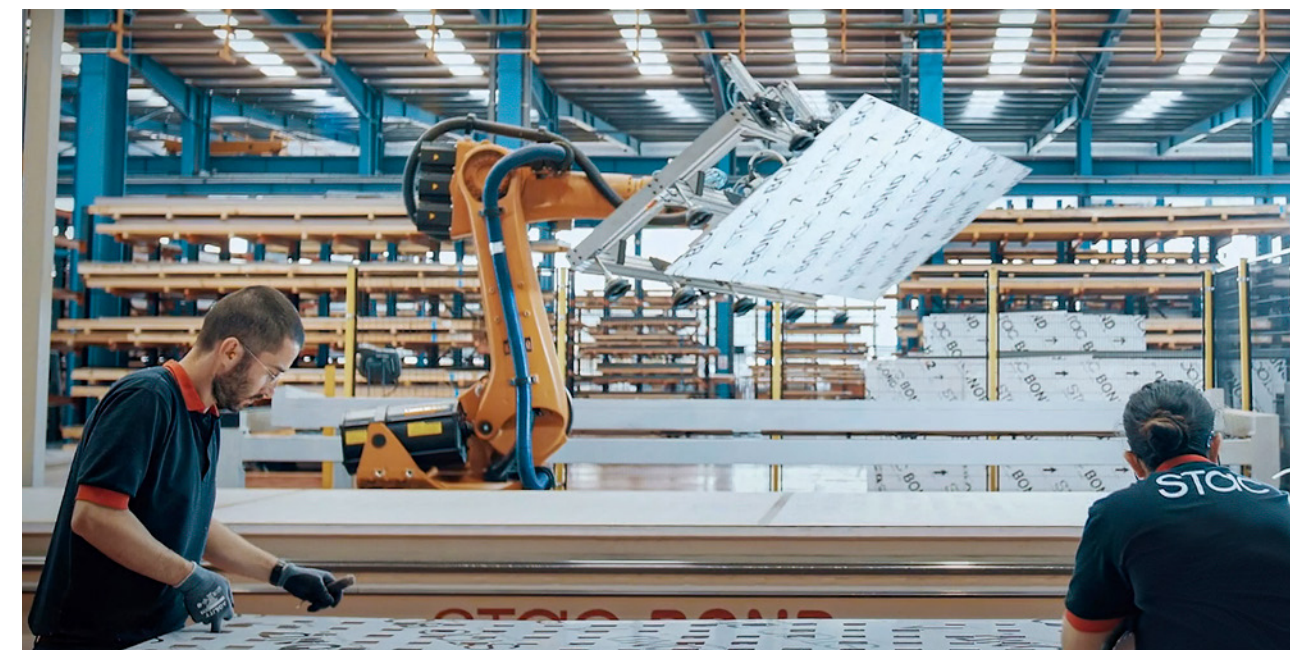
**3 ACP  
lines**

**Coil  
coating line**

**Prototyping  
laboratory**

**Latest machining  
technology**

**Panel recycling  
plant**





# By your side during all phases of the project



## Technical advice

Personalized advice with a qualified technical department made up of architects, engineers, designers and calculators to make your projects come true.



## Tailored

Development of any finishes (with any color or texture) and systems to adopted to each project.



## Optimization

Panel calculation and optimization software develops automation of the tray construction modules, and optimizes their distribution of the composite panel for greater material savings.



## Technical assistance

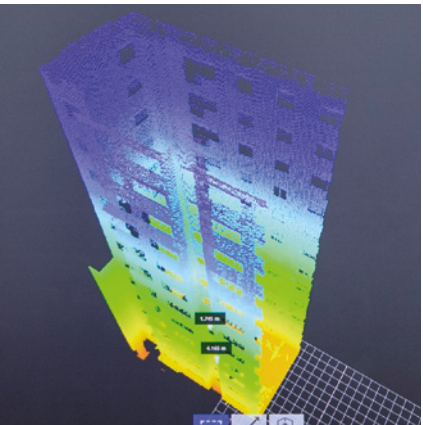
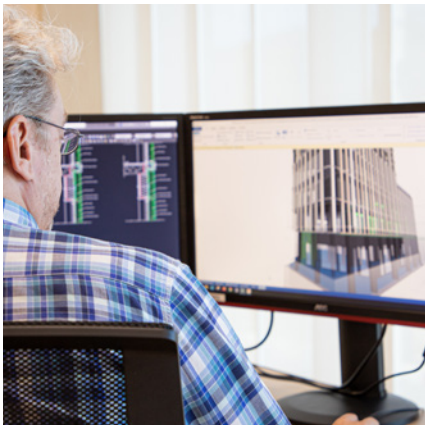
Possibility of assistance from our specialized technicians to any point of the planet to solve the most complex executions.

# Integrated solutions

From your first consultation, our technical department offers **advice so that you can find the system and modulation that best suits your needs**, regardless of the difficulty of the project.

With our 3D laser-scanner and thermographic camera tools, **we can analyze any facade** to find best suitable solution for the renovation of any construction. This complete study allows to build the BIM model of the building and work directly on it for a much quicker and more accurate calculation.

To facilitate your project we offer you ARCHVISER, our **free virtual assistant for technical documentation**, you can generate the complete and updated memory of any of your creations in 4 simple steps. Discover it on our website!





# Create spectacular facades

The STACBOND composite panel allows architects to play with the composition of light reflected on their facades to offer **greater freedom of design**.



Urbo business center  
Matosinhos, Portugal

lavagem





Columbus Maxwell Townhouses  
Chicago, USA

# Aluminum composite panel. Top quality for architecture



High resistance  
to UV rays



Quick and simple  
assembly



Perfectly  
adaptable



Excellent weight/  
surface ratio



Available in any  
RAL color



High impact  
resistance



Dimensional  
stability



Fully recyclable



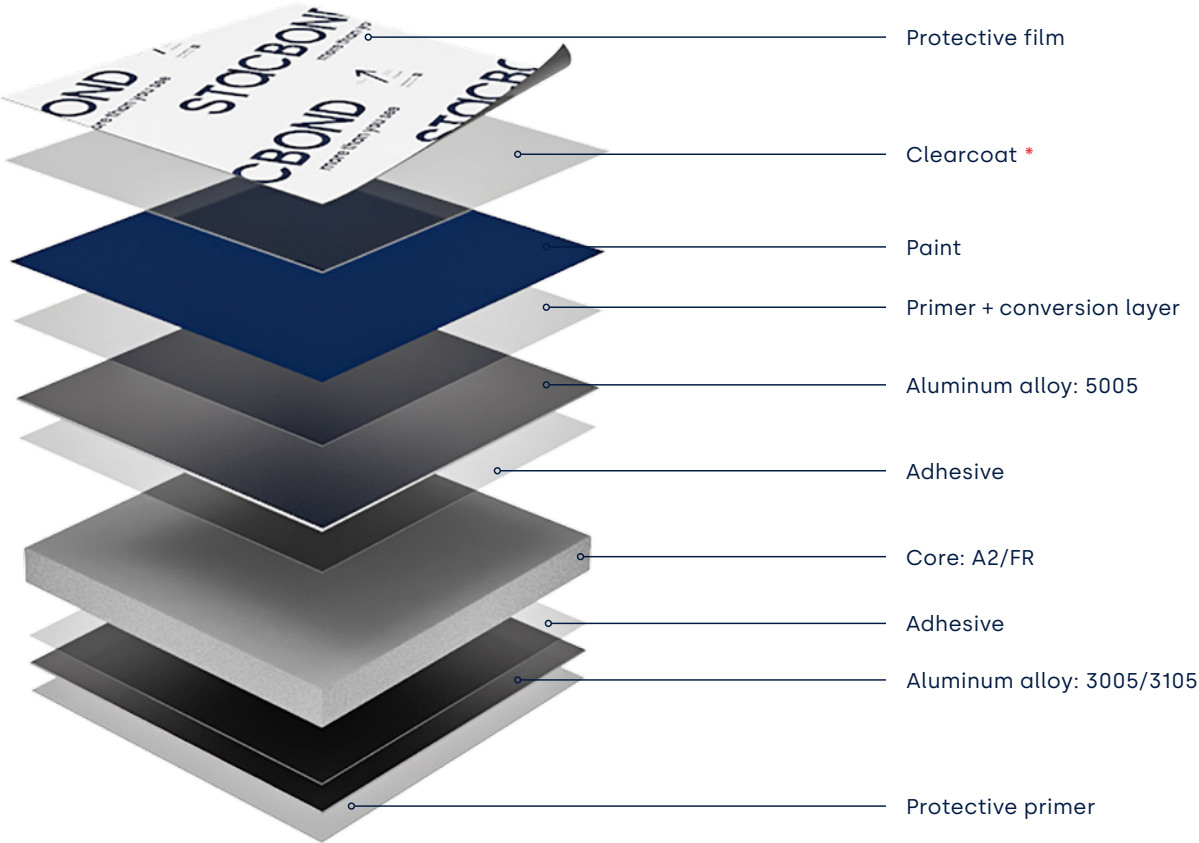
# Composition

The STACBOND composite panel is a material composed of a core with an outer and inner layer of aluminum coated with the highest quality paint that offers greater resistance to ageing.

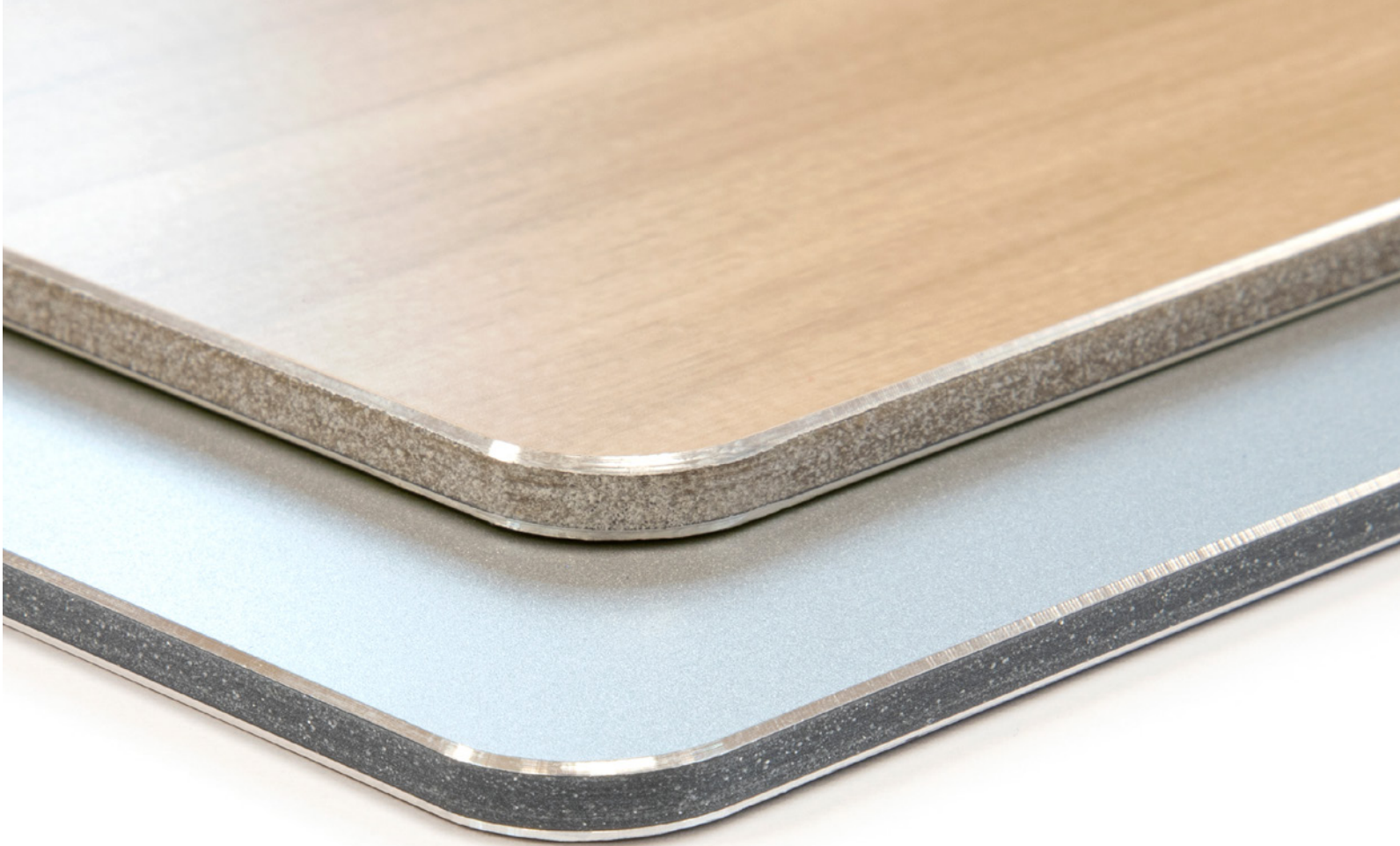
The core of the panels can have various levels of mineral charge. According to this it can be:

- **STACBOND A2** (non-combustible core)
- **STACBOND FR** (fire retardant core).

During the manufacturing process, the STACBOND composite panel undergoes rigorous testing and exhaustive internal and external quality controls, thanks to which it has obtained CE marking and EPD certification.



\*Three-coat paint available on request.



## New recycled cores

We are committed with the environment. So much so that our FR and A2 cores are made from recycled components.

Thanks to this, we are able to reduce the carbon footprint of our products, creating the **most sustainable solutions without compromising on quality**, controlling the entire manufacturing process from the procurement of raw materials to the finished product.



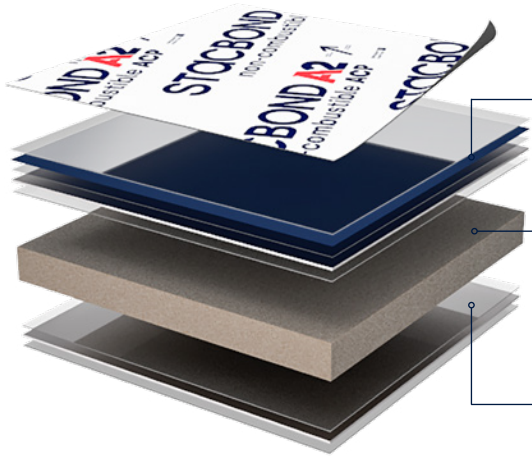
Magnum business center  
Kaunas, Lithuania  
STACBOND A2 non-combustible composite panel.



## Non-combustible panel

The **STACBOND A2** aluminum composite panel, with a non-combustible mineral core has been developed to meet the highest standards regarding current fire regulations.

**STACBOND A2**  
non-combustible ACP



Aluminum foil with a thickness of 0.02 in (0.5 mm) (alloy: 5005)

**Mineral core** with a thickness of 0.118 in (3 mm) composed of 90% difficult to burn mineral material.

Aluminum foil with a thickness of 0.02 in (0.5 mm) (alloy: 3005 / 3105)\*

\* Possibility of alloy 5005 upon customer request.

Physical specifications | Especificaciones físicas | Spécifications physiques

Total thickness   Espesor total   Épaisseur totale	4 mm
Panel weight   Peso panel   Poids du panneau	9.30 ± 0.50 kg/m²

A2 core specifications | Especificaciones núcleo A2 | Spécifications noyau A2

Density   Densidad   Densité	2.20 ± 0.15 g/cm³
------------------------------	-------------------

Fire classification | Clasificación frente al fuego | Classification de réaction au feu

EU	UNE-EN 13501	A2-s1, d0
USA	ASTM E84	FS: 0 SD: 10
	NFPA 285	PASS
Poland	PN-B-02867:2013-06	NRO
Hungary	MSZ 14800-6:2020	PASS





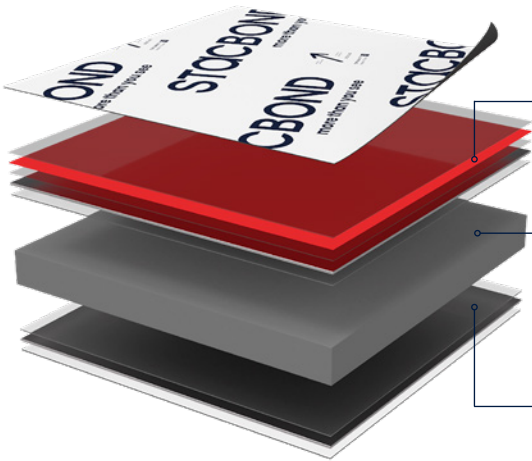
Valley View  
Oslo, Norway  
STACBOND FR fire retardant composite panel.

## Fire retardant panel

The **STACBOND FR** aluminum composite panel has an inner core with a fire retardant mineral filler.

Thanks to its excellent mechanical properties, this attractive construction solution meets most fire classification requirements.

**STACBOND FR**  
fire retardant **ACP**



Aluminum foil with a thickness of 0.02 in (0.5 mm) (alloy: 5005)

**Core with 70% mineral filler** and 0.118 in (3mm) thickness meets the most stringent fire certifications.

Aluminum foil with a thickness of 0.02 in (0.5 mm) (alloy: 3005 / 3105)\*

\* Possibility of alloy 5005 upon customer request.

### Physical specifications | Especificaciones físicas | Spécifications physiques

Total thickness   Espesor total   Épaisseur totale	4 mm
Panel weight   Peso panel   Poids du panneau	7.70 ± 0.50 kg/m²

### A2 core specifications | Especificaciones núcleo A2 | Spécifications noyau A2

Density   Densidad   Densité	1.70 ± 0.10 g/cm³
------------------------------	-------------------

### Fire classification | Clasificación frente al fuego | Classification de réaction au feu

EU	UNE-EN 13501	<b>B-s1, d0</b>
USA	ASTM E84	<b>FS: 0 SD: 5</b>
	NFPA 285	<b>PASS</b>
Canada	CAN/ULC-S102	<b>SD: 0 FS: 0</b>
	ULC-S134	<b>PASS</b>
Poland	PN-90/8-02867	<b>NRO</b>
Israel	TY 755:2013	<b>B-s1, d0</b>



Over 100 finishes  
in stock



## More than just colors, it is creating the **perfect finish for your project**

We have our **own color laboratory with the best specialists** to achieve the exact finish you need to turn your project into a trend-setting urban icon.

In addition, it can be supplied in any color of the RAL, PANTONE or NCS charts. Consult us.

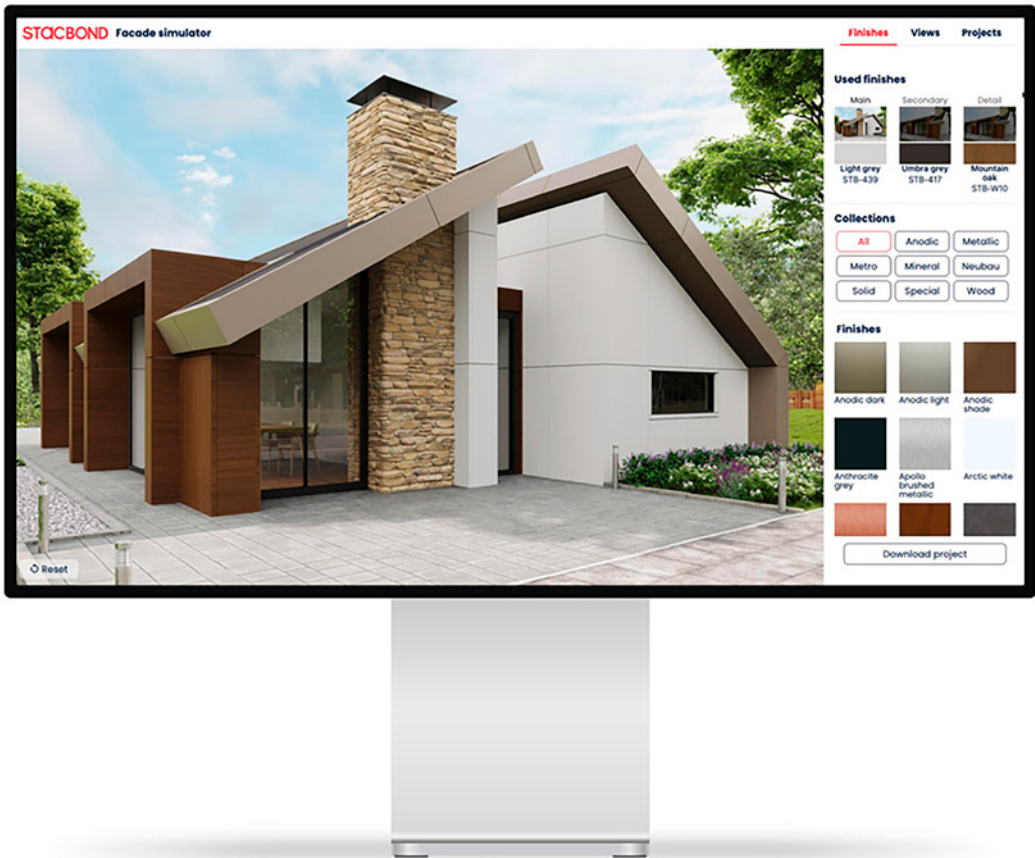




# STACBOND facade simulator

At STACBOND we have developed a **new quick and easy online tool** that allows you to freely combine our finishes on different types of buildings.

Once the proposal has been created, you can download your project file with the chosen finishes.



Try it!

## Your project in 3 easy steps

### 01 Choose project

Discover different styles of architectures and choose the one that best suits your project. What are you looking for? A single-family home? Refurbishing a residential building? And what about an institutional project?



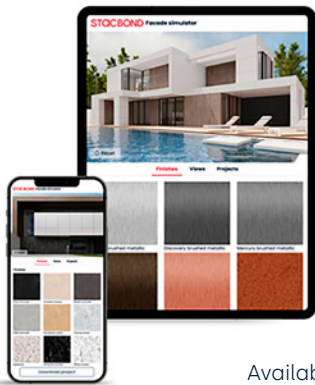
### 02 Combine finishes

Choose any finish from our Anodic, Metallic, Metro, Mineral, Neubau, Solid, Special and Wood collections and combine to create a unique project, without limiting your creativity.



### 03 Instant download

After a simple registration process, you will receive a PDF by email with different views of the project created and the selected finishes.



Available on all devices



# Beyond aluminum

STACBOND panels are available in **natural finishes** such as copper or zinc. Ask for more information about the natural oxidation of these finishes.

**Ibrahim's Khan theater**

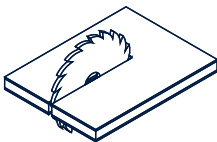
Paphos, Cyprus

STACBOND composite panel with Natural copper finish.



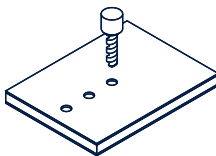
# The equipment for any process

STACBOND has set itself the goal of supporting your creativity through a wide variety of innovative finishes. Furthermore, through our panel **machining and transformation processes**, the range of aesthetic possibilities available to you is infinite.



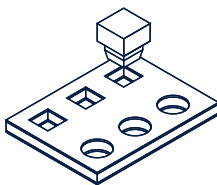
## Cutting

Straight, curved and angled cuts are possible, depending on the tools used.



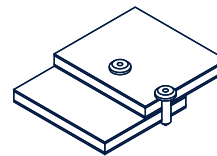
## Drilling

Drilling can be frequent during installation of the product on site.



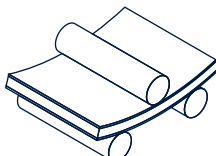
## Punching and die cutting

Following certain parameters, it can be punched and die-cut into different shapes.



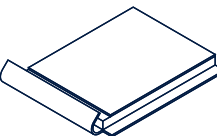
## Riveting and screwing

Can be installed using rivets or screws, either to each other or to other materials.



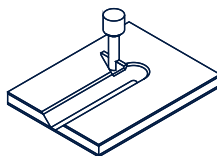
## Bending with rollers

To make curved panels the best system is using a bending machine with 3/4 rollers.



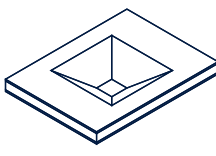
## Edge folding

We offer three types of border: simple, double interior and double exterior.



## Milling

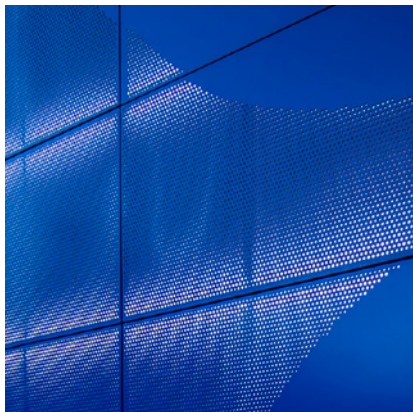
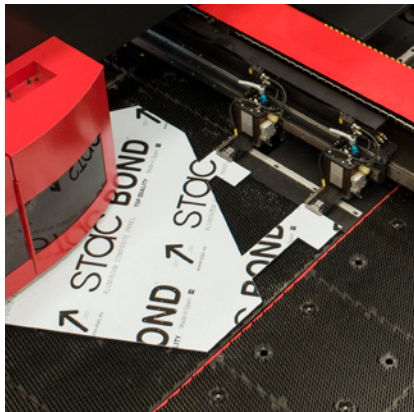
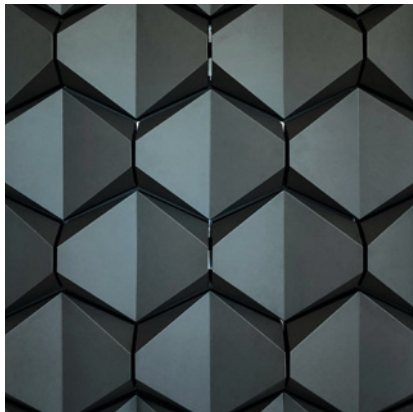
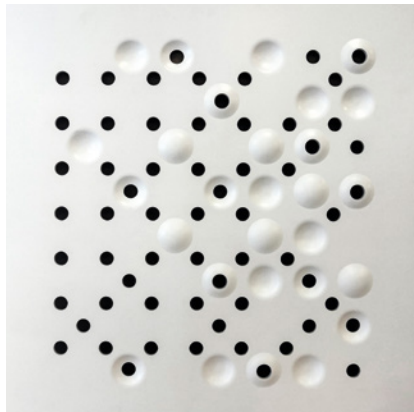
The partial milling of the panels allows them to be bent into shape.



## Embossing

It is possible to stamp and engrave using CNC machines.

# One product, thousands of solutions



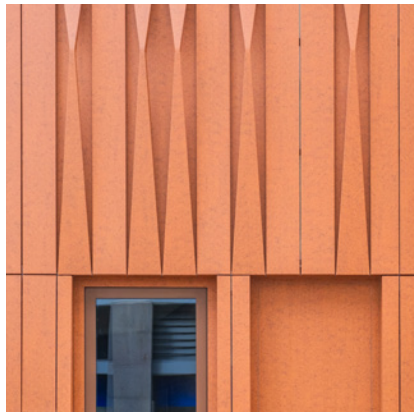
4 CNC pantographs

CNC punching machine

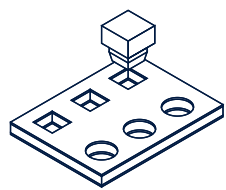
CNC bending machine

Embossing machine

Edging machine







## Punching

The STACBOND composite panel can be perforated to give it high levels of personalization and creativity, creating **games of light on the building's surface**.

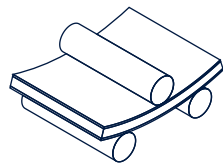
Thanks to the advanced technology available in the STACBOND technical department, different sizes, shapes and distances between perforations are possible, with top quality results.



Shaping  
your ideas

Punt Sniep  
Diemen, Netherlands





## Bending

The curved STACBOND composite panel allows you to **adapt completely to the surface** of a project and totally modify its shape quickly and efficiently.

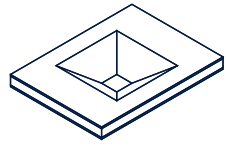
For this, STACBOND has the necessary technology to generate concave and convex surfaces compatible with all ventilated façade systems.



Precise  
bending

Maximus hotel  
Byblos, Lebanon





## Embossing

Thanks to the modern infrastructure used at our production center, we develop numerous types and sizes of composite panel embossing, therefore offering **great creative freedom of embossments** that give personality to the skin of your projects.

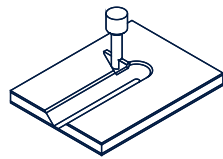
STACBOND works in close collaboration with architects and designers to materialize the most avant-garde proposals.



Original  
surfaces

Beatriz de Angelo Hospital  
Loures, Portugal





## 3D shaping

Shape your ideas. The STACBOND composite panel can be shaped, offering an **unlimited range of volumetric shapes** that complement any type of architectural facade, instantly giving it a distinctive character.

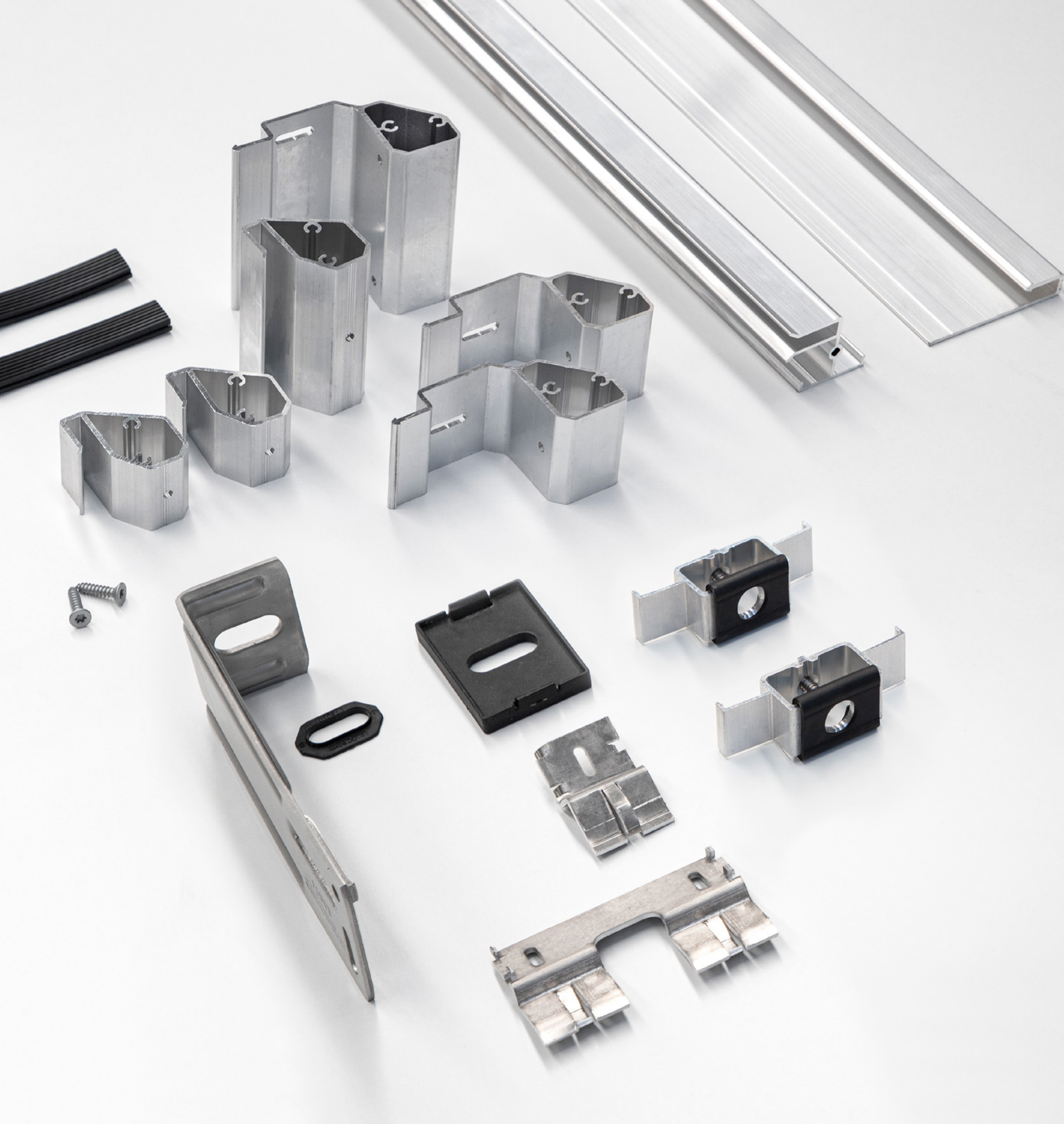


Inspiring  
forms



Trigone building  
Paris, France





## More systems, more solutions



STACBOND has 10 mounting systems to offer new possibilities and solutions to contemporary architecture. These systems are meticulously designed to suit the particular needs of each project. They are divided into two main groups according to their substructure:

- **T substructure**  
Consisting of special L-shaped spacers and T upright profile which offers a great advantage in material and weight savings.
- **OMEGA substructure**  
Consisting of U or DOUBLE T spacers and OMEGA upright profile which offers the possibility of combining with other curved modulation systems in the vertical of the facade.



Consult our technical catalogue for more information about STACBOND systems.

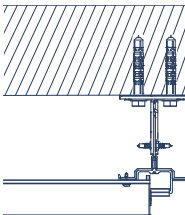


# Assembly systems

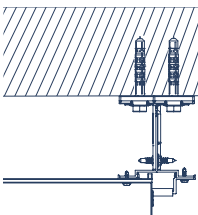
## Hanging system

Hanging assembly system with hidden fixings, especially **suitable for facades with several openings and vertical modulations.**

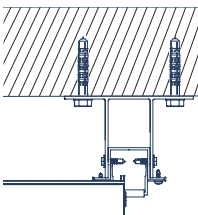
STB-T-CH-PRO



STB-T-CH



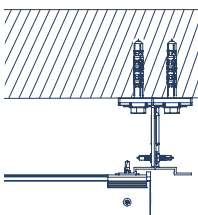
STB-CH



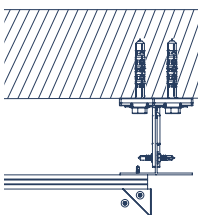
## Male-female system

Male-female assembly system with hidden fixings especially **suitable for facades with few holes and horizontal modulations.**

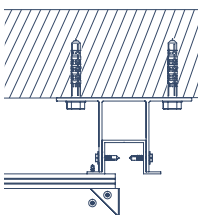
STB-T-SZ-PRO



STB-T-SZ



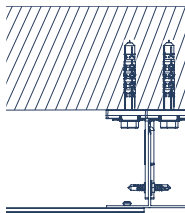
STB-SZ



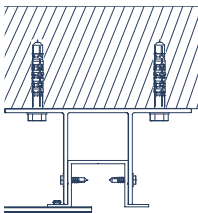
## Riveted system

Highly versatile assembly system with visible fixings, which **adapts perfectly to any architectural style.**

STB-T-REM



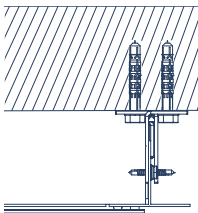
STB-REM



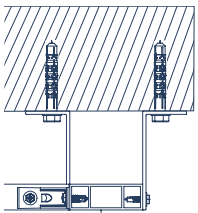
## Glued system

Highly versatile assembly system with hidden fixings, especially **suitable for any architectural style and interior cladding.**

STB-T-PEG



STB-PEG







# We are quality certified

STACBOND systems follow a **controlled process through rigorous internal testing and quality control** in our laboratories. They also undergo external audits by the most prestigious construction institutes working in the different countries where we are certified.

Certifications are granted in accordance with American(International Building Code), Canadian (CAN/ULC S102 and S134) and European standards (EAD GUIDE 090062-00-0404). We also hold ISO 9001 and ISO 14001 certifications to guarantee that our construction systems comply with the national regulations of each country.



USA



Canada



Spain



Mexico



Poland



France



UK



Romania



Switzerland



International



International

The hanging, male-female and rived systems have the European technical evaluation document ETE/ETA 15-0655 and CE marking.



# We are energy-efficient

All our products **have a direct impact on the energy consumption** of buildings, making them more efficient and sustainable.

Our composite panel and substructure systems are present in the facade of **Passivhaus-rated** buildings.

**Powerhouse Brattørkaia**  
Trondheim, Norway

BREEAM-Excellent certified building with STACBOND panel facade and photovoltaic panels.



# Refurbishing to give a second chance

Refurbishing a building is one of the **most environmentally friendly alternatives**. This, combined with the choice of recyclable materials, results in a much more sustainable construction.

**Espazo Amizar**  
A Coruña, Spain

Before



Complete building refurbishment using the STB-CH hanging system combined with STACBOND composite panel slats.



# Increased energy savings



**Nova Cruz hotel**  
Santa María da Feira, Portugal

Complete refurbishment of the Nova Cruz hotel using the STB-T-CH hanging system combining Copper metallic and Carbon finishes.

## Refurbishment

Replacing old, worn out or deficient materials with STACBOND technology **improves the acoustic and thermal insulation, which has a positive impact on the energy efficiency** of the building.

Given that they are made from recyclable material, their use is much less harmful to the environment.

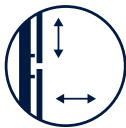
Thanks to the innovation made by our designers and the lightness achieved in our systems, their installation on the facade is much **cleaner, easier and more convenient** than others.

Our technical department has the leading tools for façade study and development.

## Advantages over other systems



Structural lightness



Larger formats



Watertightness



Quick and easy  
installation



Infinite shapes and  
geometries



Complex bends



Easy maintenance



Finials in the  
material itself





STACBOND

100% recyclable

## We believe the world can be a better place

All STACBOND products have obtained **EPD** certification. This is the document that establishes the environmental footprint of a product, from the beginning of its manufacturing process until it leaves the installations where it was made.

In fact, we give a second chance to each product thanks to **our recycling system capable of reusing 100%** of the aluminium composite panel.

We have recently obtained the **Zero Waste Management Certification**, after verification by Bureau Veritas of the quantities of waste that are recovered, recycled or revalued instead of being sent to landfill.

STACBOND is also **ISO 14001** certified, which guarantees that the Environmental Management System (EMS) carried out at our facilities complies with the requirements of this regulation.

Garden house  
Las Palmas, Spain





# STACBOND

## Finishes

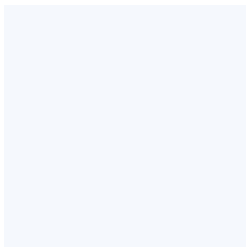
The latest aesthetic trends are available for your project to make it unique and turn it into a landmark.



**Mirror**  
STB-M01  
Special



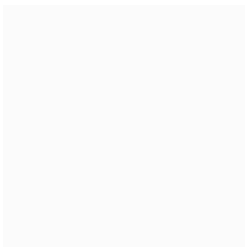
**Textured white**  
STB-4C3  
Special



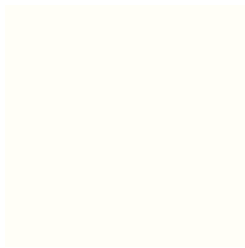
**Arctic white**  
STB-401  
Solid



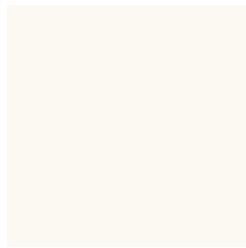
**Traffic white**  
STB-413  
Solid



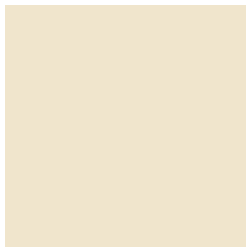
**Signal white**  
STB-459  
Solid



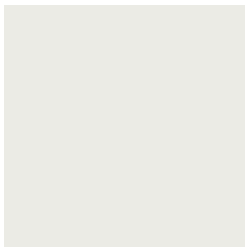
**Pure white**  
STB-420  
Solid



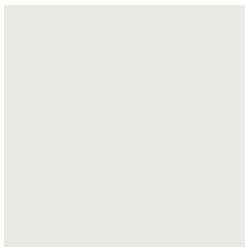
**Cream**  
STB-455  
Solid



**Ivory**  
STB-485  
Solid



**Grey white**  
STB-492  
Solid



**Light grey**  
STB-439  
Solid



**Mouse grey**  
STB-458  
Solid



**Dusty grey**  
STB-4A5  
Solid



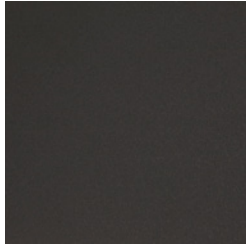
**Iron grey**  
STB-469  
Solid



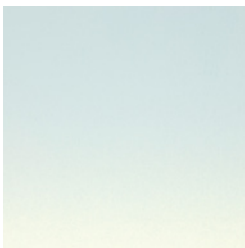
**Graphite grey**  
STB-4E3  
Solid



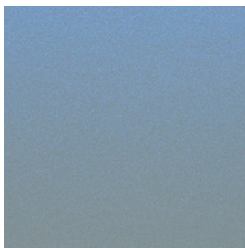
**Umbra grey**  
STB-417  
Solid



**Grain anthracite**  
STB-4D5  
Special



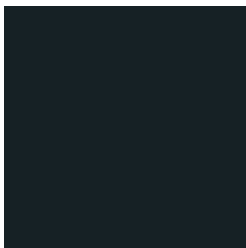
**Golden pearl**  
STB-S10  
Special



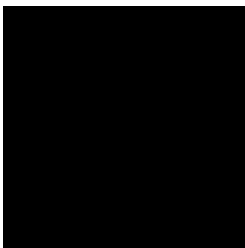
**Stellar blue**  
STB-S12  
Special



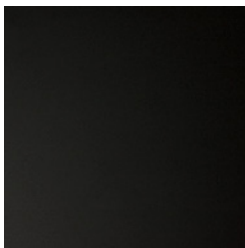
**Anthracite grey**  
STB-478  
Solid



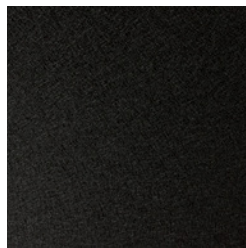
**Black grey**  
STB-451  
Solid



**Black**  
STB-415  
Solid



**Ultramatt black**  
STB-425  
Special



**Rugged black**  
STB-4E9  
Special



**High gloss black**  
STB-4F1  
Special



**Golden sand**  
STB-4D8  
Special



**Lighter much more blue**  
STB-468  
Special  
designed by  
Luis Vidal + Architects



**Natural blue**  
STB-430  
Solid



**Ultramarine blue**  
STB-412  
Solid



**Steel blue**  
STB-473  
Solid



**Yellow green**  
STB-484  
Solid



**Dark green**  
STB-487  
Solid



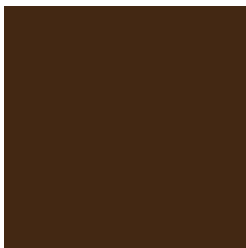
**Traffic yellow**  
STB-493  
Solid



**Sunset**  
STB-S08  
Special



**Orange**  
STB-495  
Solid



**Brown**  
STB-494  
Solid



**Traffic red**  
STB-411  
Solid



**Blood red**  
STB-498  
Solid



**Deep red**  
STB-488  
Solid





**Tromso winter**  
STB-P12  
Metro



**Gallaecia sense**  
STB-GR3  
New



**Travertine**  
STB-TR1  
Mineral



**Straw chestnut sense**  
STB-W13  
New



**Natural oak**  
STB-W09  
Wood



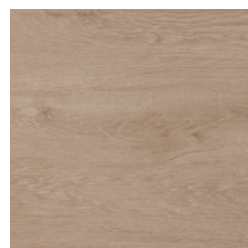
**Dry concrete**  
STB-H01  
Metro



**Palatino sense**  
STB-PC1  
New



**Venetian theater**  
STB-P03  
Metro



**Linen chestnut**  
STB-W06  
Wood



**Mountain oak sense**  
STB-W15  
New



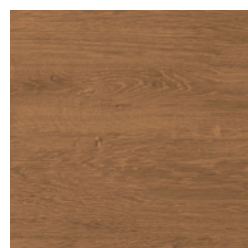
**Slate concrete**  
STB-H02  
Metro



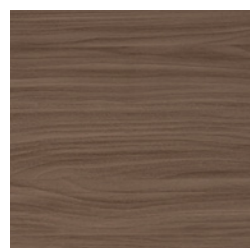
**Capri sense**  
STB-PC4  
New



**Symphony urban**  
STB-P01  
Metro



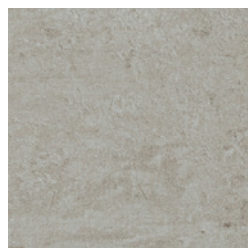
**Natural chestnut**  
STB-W07  
Wood



**Jacobean oak**  
STB-W11  
Wood



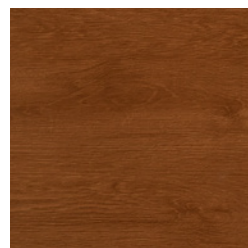
**Basalt concrete**  
STB-H03  
Metro



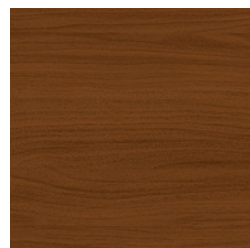
**Corbel sense**  
STB-ST3  
New



**Namibia ambar**  
STB-P04  
Metro



**Autumn chestnut sense**  
STB-W14  
New



**Mocha oak sense**  
STB-W16  
New



**Onyx concrete**  
STB-H04  
Metro

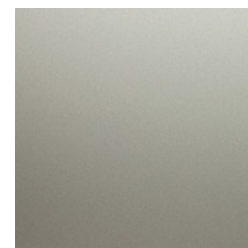


**Ontario wind**  
STB-MP2  
New

Embossed



**Natural brushed**  
STB-449  
Neubau



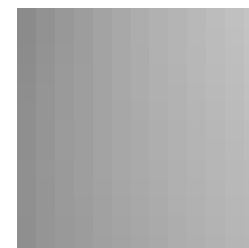
**Anodic light**  
STB-E02  
Anodic



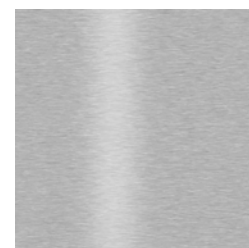
**White metallic**  
STB-400  
Metallic



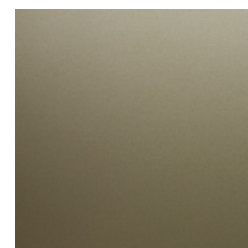
**Champagne metallic**  
STB-405  
Metallic



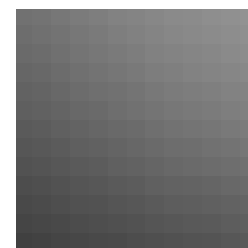
**Silver metallic**  
STB-403  
Metallic



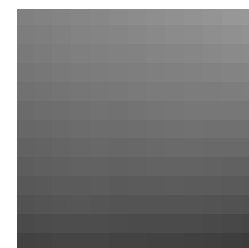
**Apollo brushed metallic**  
STB-B01  
Neubau



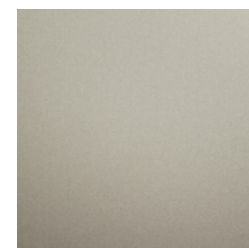
**Anodic dark**  
STB-E03  
Anodic



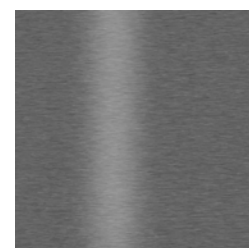
**Titanium metallic**  
STB-407  
Metallic



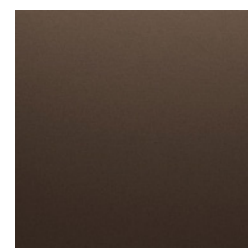
**Grey metallic**  
STB-402  
Metallic



**Bronze metallic**  
STB-406  
Metallic



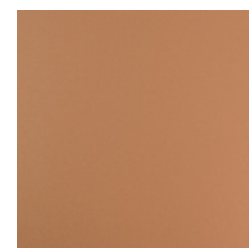
**Mercury brushed metallic**  
STB-B02  
Neubau



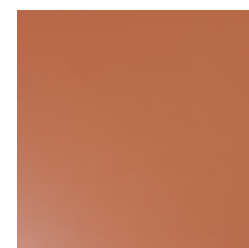
**Anodic shade**  
STB-4B3  
Anodic



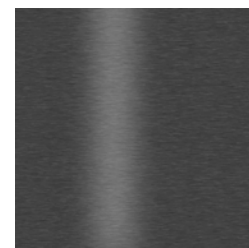
**Gold metallic**  
STB-454  
Metallic



**Copper metallic**  
STB-414  
Metallic



**Terracotta**  
STB-450  
Metallic



**Discovery brushed metallic**  
STB-B03  
Neubau



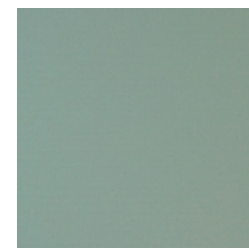
**Ariane brushed metallic**  
STB-B05  
Neubau



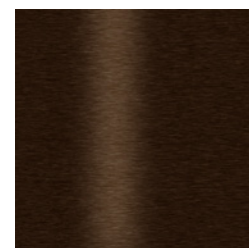
**Intense copper**  
STB-4D7  
Metallic



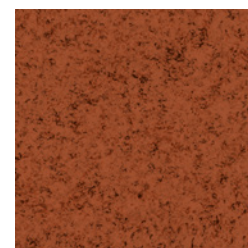
**Blue metallic**  
STB-409  
Metallic



**Jade green**  
STB-410  
Metallic



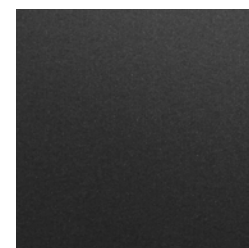
**Soyuz brushed metallic**  
STB-B04  
Neubau



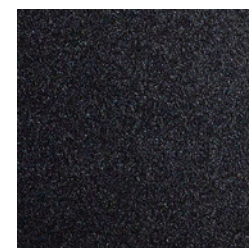
**Neo corten**  
STB-CT1  
Neubau



**West corten sense**  
STB-CT3  
New



**Carbon**  
STB-408  
Metallic



**Dark grey**  
STB-483  
Metallic






Van der Valk Hotel Haarlem  
Haarlem, Netherlands





# We are near to you

STACBOND is at your disposal for any queries. We have technical support in Spanish, English, French, German and Italian.


## STAC Spain Headquarters

 (+34) 981 817 036

 Aldea A Matanza s.n. Pol. ind. Pícosa, 15900 Padrón, A Coruña, España

 info@stac.es

## STAC Morroco

 (+212) 053952 11 36

 Route nationale 1, km 92, Commune rurale Laouamra, 92000 Larache, Maroc

 maroc@stac.es

## STAC Poland

 (+48) 322 630 740

 Ul. Kluczevska 2A, 32-300 Olkusz, Poland

 polska@stac.es


## STAC USA


 +1 214 499 1591

 228 East 45th St, Suite 9E New York, 10017 USA

 usa@stacbond.es


## STACBOND Spain production complex


 (+34) 987 553 117


 C/ Isaac Prada Bodelón P. 2 Pol. ind. de La Rozada 24516 Parandones, León España

 info@stacbond.es

## STAC México

 (+52) 4422517019

 Parque Indus. PyME, Estatal 431, Los Cues, km 5.8 Huimilpan, 76970, Querétaro, México

 mexico@stac.es


## STAC Portugal


 (+351) 914 399 155


 Rua Cidade do Rio Grande, 13 2º Dtº Fração F, 3750-137 Águeda, Portugal

 portugal@stac.es

## STAC Turkey


 (+90) 212 9360860

 Halkalı Merkez Mahallesi Basın Ekspres Caddesi. Capital Tower Kat :2 No 21. Küçükçekmece İstanbul. Türkiye

 operasyon@stac.es

 **Distributors**  
Distribuidores | Distributeurs

 **Production centers**  
Centros productivos | Centres de production

 **Branches**  
Delegaciones | Délégations