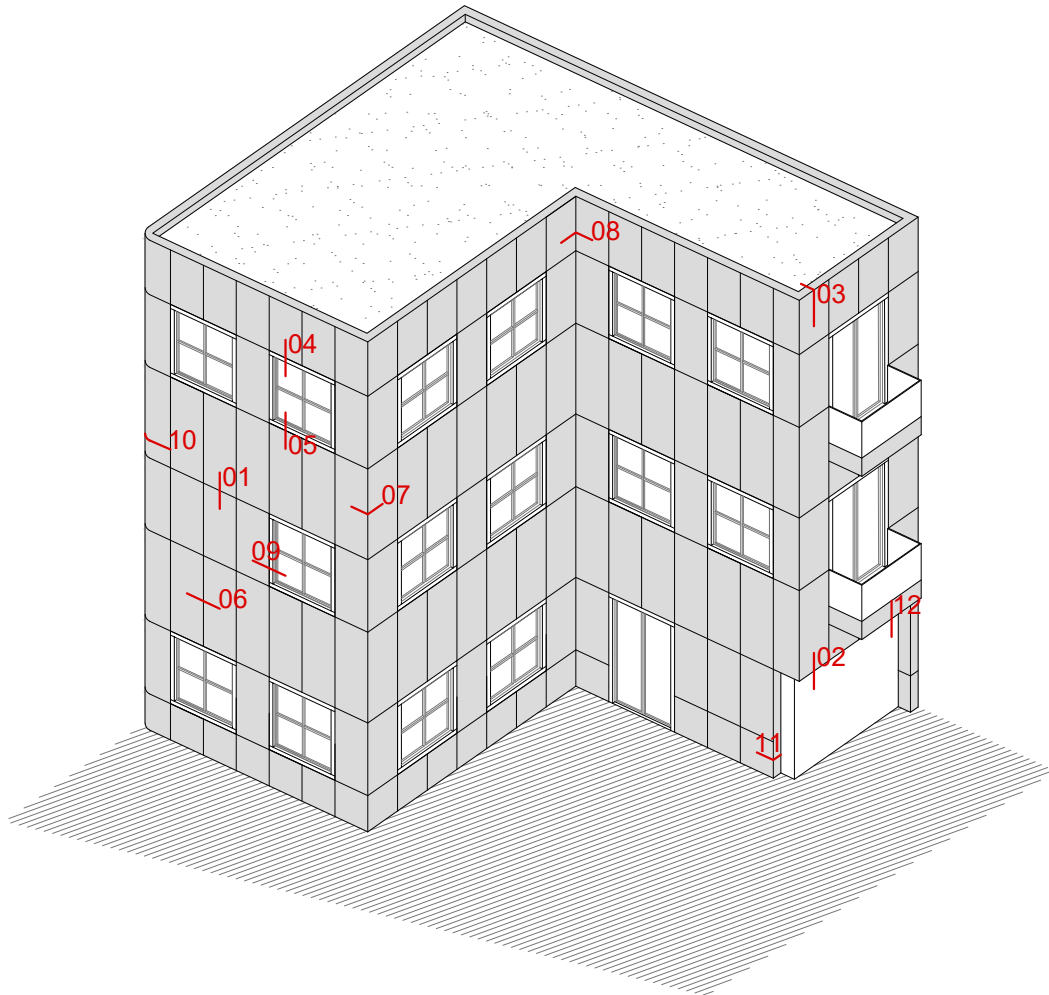


Any unauthorised reproduction, distribution, public communication and/or transformation of this document constitutes a copyright violation.

STAC® is not responsible for its use which is, in any case, intended for evaluation by technically skilled persons, and it is subject to their own discretion and risk.

This information is for conceptual use only, and it may change.



- |   |  |
|---|--|
| <b>1</b> VERTICAL SECTION <b>HORIZONTAL JOINT</b>   | <b>9</b> HORIZONTAL SECTION <b>WINDOW JAMB</b>           |
| <b>2</b> VERTICAL SECTION <b>LOWER CLADDING END</b> | <b>10</b> HORIZONTAL SECTION <b>ROUNDED CORNER</b>       |
| <b>3</b> VERTICAL SECTION <b>PARAPET RETURN</b>     | <b>11</b> HORIZONTAL SECTION <b>LATERAL CLADDING END</b> |
| <b>4</b> VERTICAL SECTION <b>WINDOW HEAD</b>        | <b>12</b> VERTICAL SECTION <b>CEILING</b>                |
| <b>5</b> VERTICAL SECTION <b>WINDOWS SILL</b>       |  |
| <b>6</b> HORIZONTAL SECTION <b>VERTICAL JOINT</b>   |  |
| <b>7</b> HORIZONTAL SECTION <b>OUTER CORNER</b>     |  |
| <b>8</b> HORIZONTAL SECTION <b>INNER CORNER</b>     |  |

REV 08/18

# SYSTEM STB-REM

CONSTRUCTION DETAILS

SECCIÓN VERTICAL

HORIZONTAL JOINT BIDIRECTIONAL

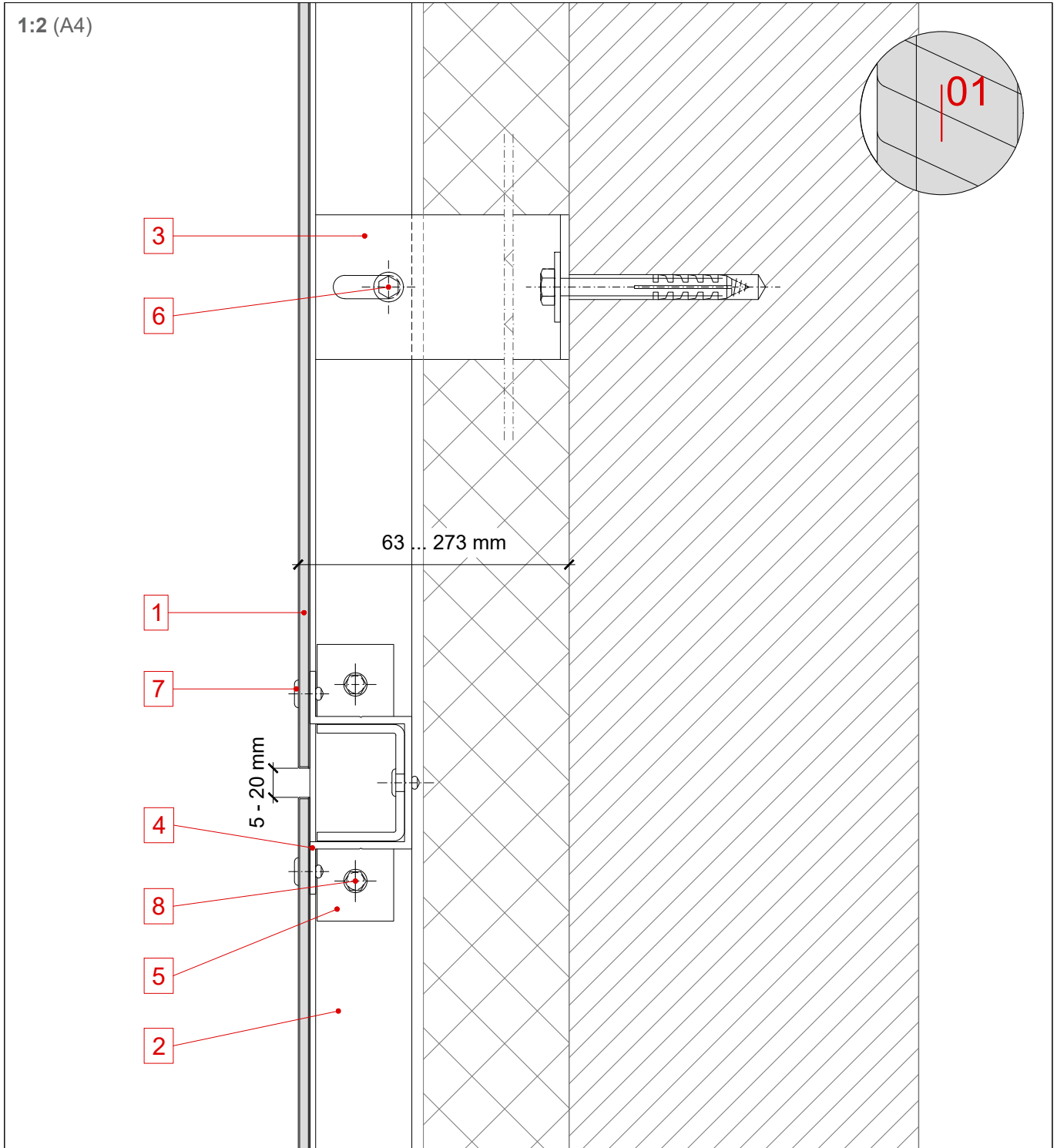
# STAC BOND

REM..01.01

Any unauthorised reproduction, distribution, public communication and/or transformation of this document constitutes a copyright violation.

STAC® is not responsible for its use which is, in any case, intended for evaluation by technically skilled persons, and it is subject to their own discretion and risk.

This information is for conceptual use only, and it may change.



1 STACBOND panel

2 Upright profile OMEGA

3 Spacer DOUBLE T

4 Crossbar profile OMEGA

5 Studs joining STB-REM

6 Through screw M 6 x 60/70

7 Blind rivet

8 Self-drilling screw

9 Auxiliar profile

10 Water drainage holes

11 Aluminium plate for fixing and riveting

REV 08/18

# SYSTEM STB-REM

CONSTRUCTION DETAILS

SECCIÓN VERTICAL

HORIZONTAL JOINT UNIDIRECCIONAL

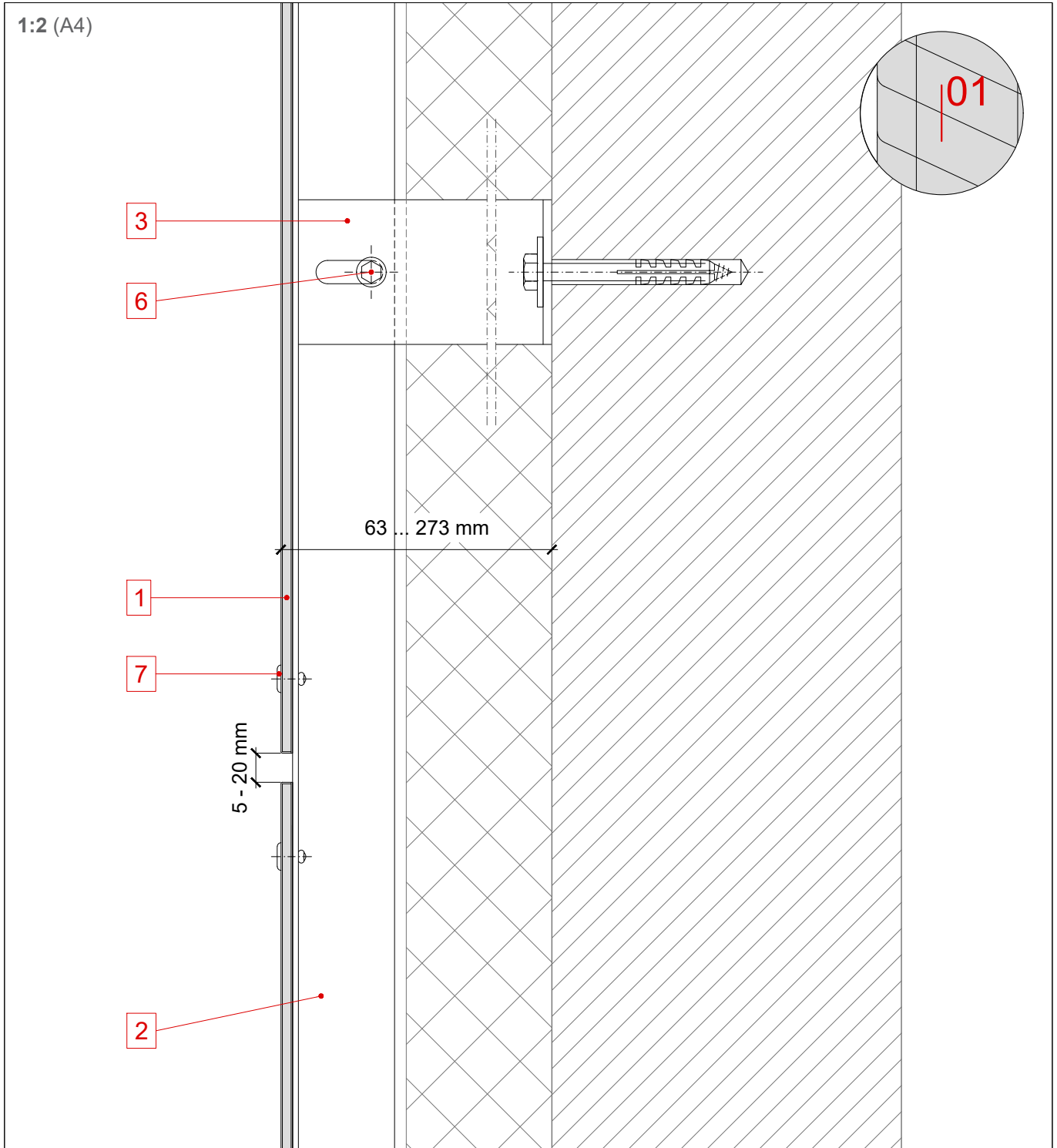
# STAC BOND

REM..01.02

Any unauthorised reproduction, distribution, public communication and/or transformation of this document constitutes a copyright violation.

STAC® is not responsible for its use which is, in any case, intended for evaluation by technically skilled persons, and it is subject to their own discretion and risk.

This information is for conceptual use only, and it may change.



1 STACBOND panel

2 Upright profile OMEGA

3 Spacer DOUBLE T

4 Crossbar profile OMEGA

5 Studs joining STB-REM

6 Tough screw M 6 x 60/70

7 Blind rivet

8 Self-drilling screw

9 Auxiliar profile

10 Water drainage holes

11 Aluminium plate for fixing and riveting

REV 08/18

# SYSTEM STB-REM

CONSTRUCTION DETAILS

SECCIÓN VERTICAL

LOWER CLADDING END

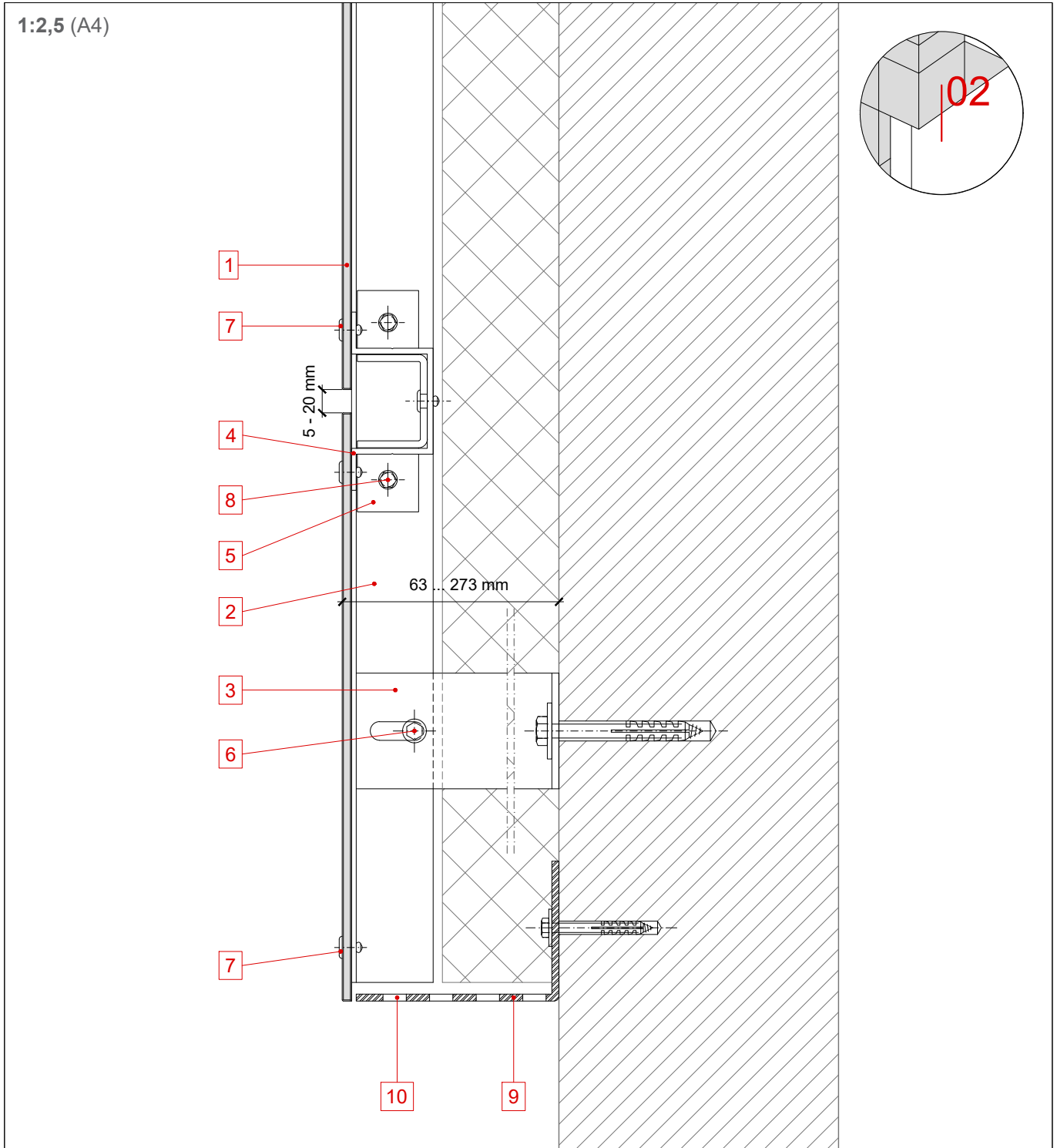
# STAC BOND

REM..02.01

Any unauthorised reproduction, distribution, public communication and/or transformation of this document constitutes a copyright violation.

STAC® is not responsible for its use which is, in any case, intended for evaluation by technically skilled persons, and it is subject to their own discretion and risk.

This information is for conceptual use only, and it may change.



1 STACBOND panel

2 Upright profile OMEGA

3 Spacer DOUBLE T

4 Crossbar profile OMEGA

5 Studs joining STB-REM

6 Though screw M 6 x 60/70

7 Blind rivet

8 Self-drilling screw

9 Auxiliar profile

10 Water drainage holes

11 Aluminium plate for fixing and riveting

REV 08/18

# SYSTEM STB-REM

CONSTRUCTION DETAILS

SECCIÓN VERTICAL

LOWER CLADDING END

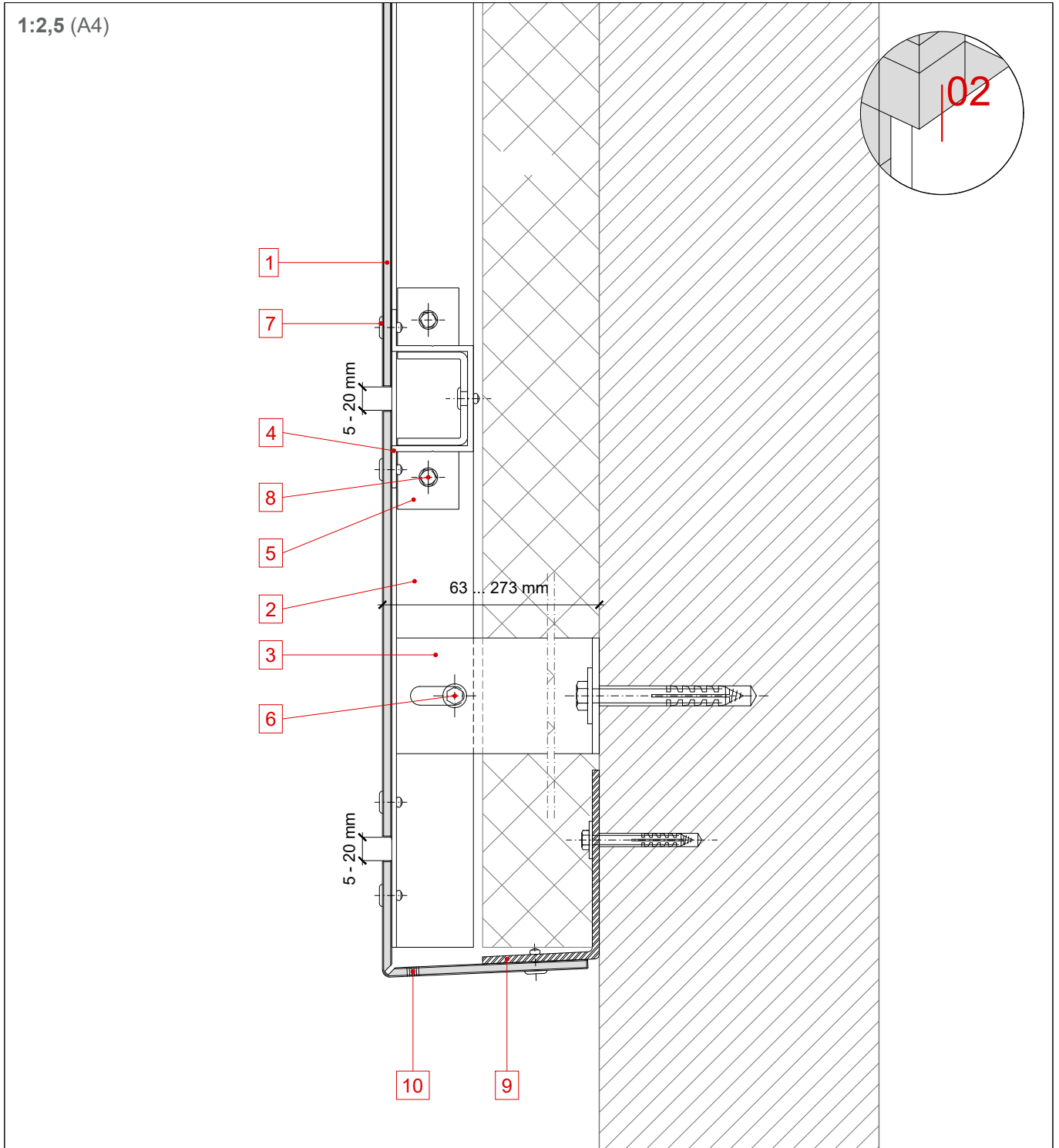
# STAC BOND

REM..02.02

Any unauthorised reproduction, distribution, public communication and/or transformation of this document constitutes a copyright violation.

STAC® is not responsible for its use which is, in any case, intended for evaluation by technically skilled persons, and it is subject to their own discretion and risk.

This information is for conceptual use only, and it may change.



1 STACBOND panel

2 Upright profile OMEGA

3 Spacer DOUBLE T

4 Crossbar profile OMEGA

5 Studs joining STB-REM

6 Through screw M 6 x 60/70

7 Blind rivet

8 Self-drilling screw

9 Auxiliar profile

10 Water drainage holes

11 Aluminium plate for fixing and riveting

REV 08/18

# SYSTEM STB-REM

CONSTRUCTION DETAILS

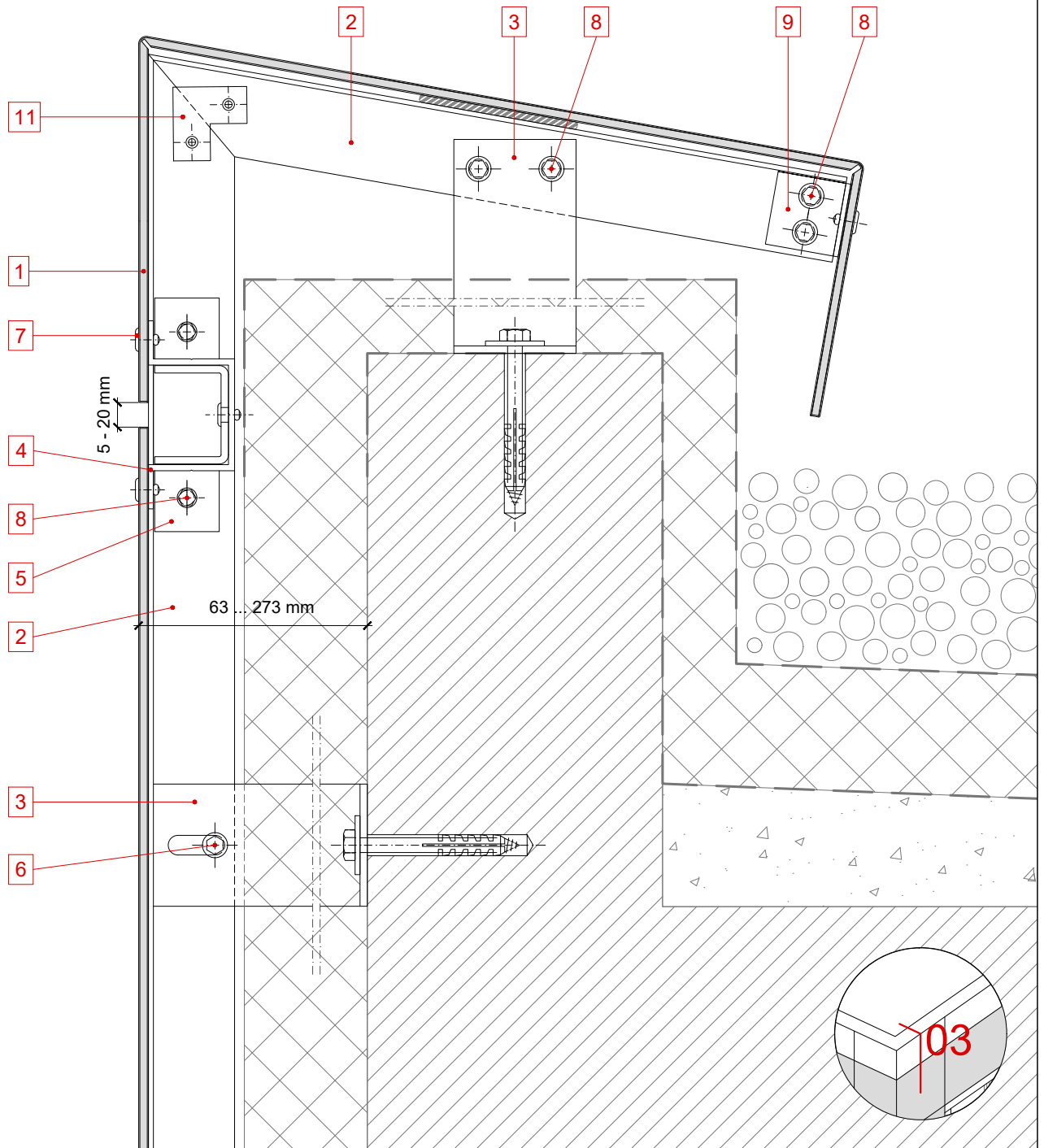
SECCIÓN VERTICAL

PARAPET RETURN

# STAC BOND

REM..03.01

1:2,5 (A4)



1 STACBOND panel

2 Upright profile OMEGA

3 Spacer DOUBLE T

4 Crossbar profile OMEGA

5 Studs joining STB-REM

6 Tough screw M 6 x 60/70

7 Blind rivet

8 Self-drilling screw

9 Auxiliar profile

10 Water drainage holes

11 Aluminium plate for fixing and riveting

REV 08/18

# SYSTEM STB-REM

CONSTRUCTION DETAILS

SECCIÓN VERTICAL

WINDOW HEAD

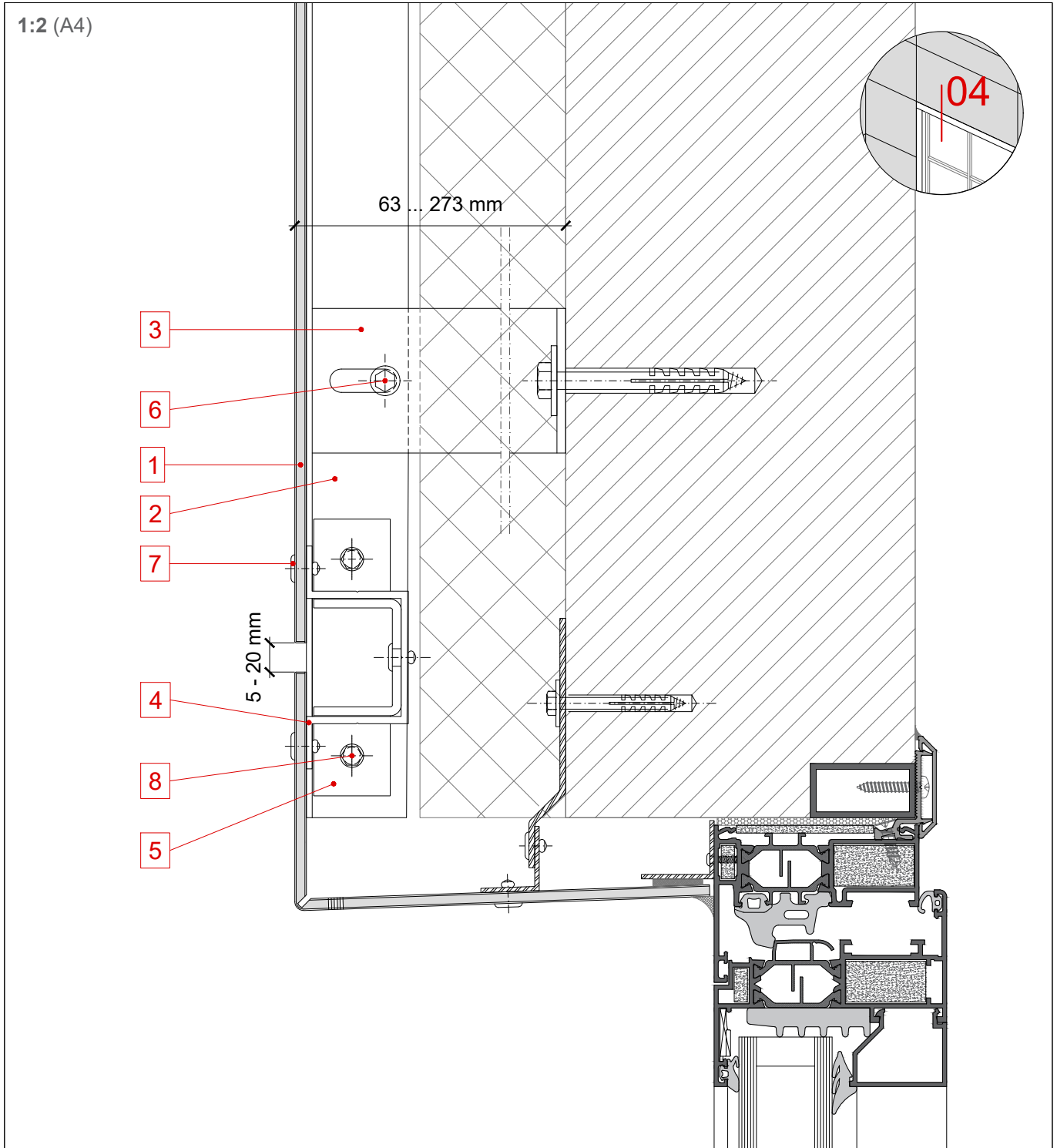
# STAC BOND

REM..04.01

Any unauthorised reproduction, distribution, public communication and/or transformation of this document constitutes a copyright violation.

STAC® is not responsible for its use which is, in any case, intended for evaluation by technically skilled persons, and it is subject to their own discretion and risk.

This information is for conceptual use only, and it may change.



1 STACBOND panel

2 Upright profile OMEGA

3 Spacer DOUBLE T

4 Crossbar profile OMEGA

5 Studs joining STB-REM

6 Tough screw M 6 x 60/70

7 Blind rivet

8 Self-drilling screw

9 Auxiliar profile

10 Water drainage holes

11 Aluminium plate for fixing and riveting

REV 08/18

# SYSTEM STB-REM

CONSTRUCTION DETAILS

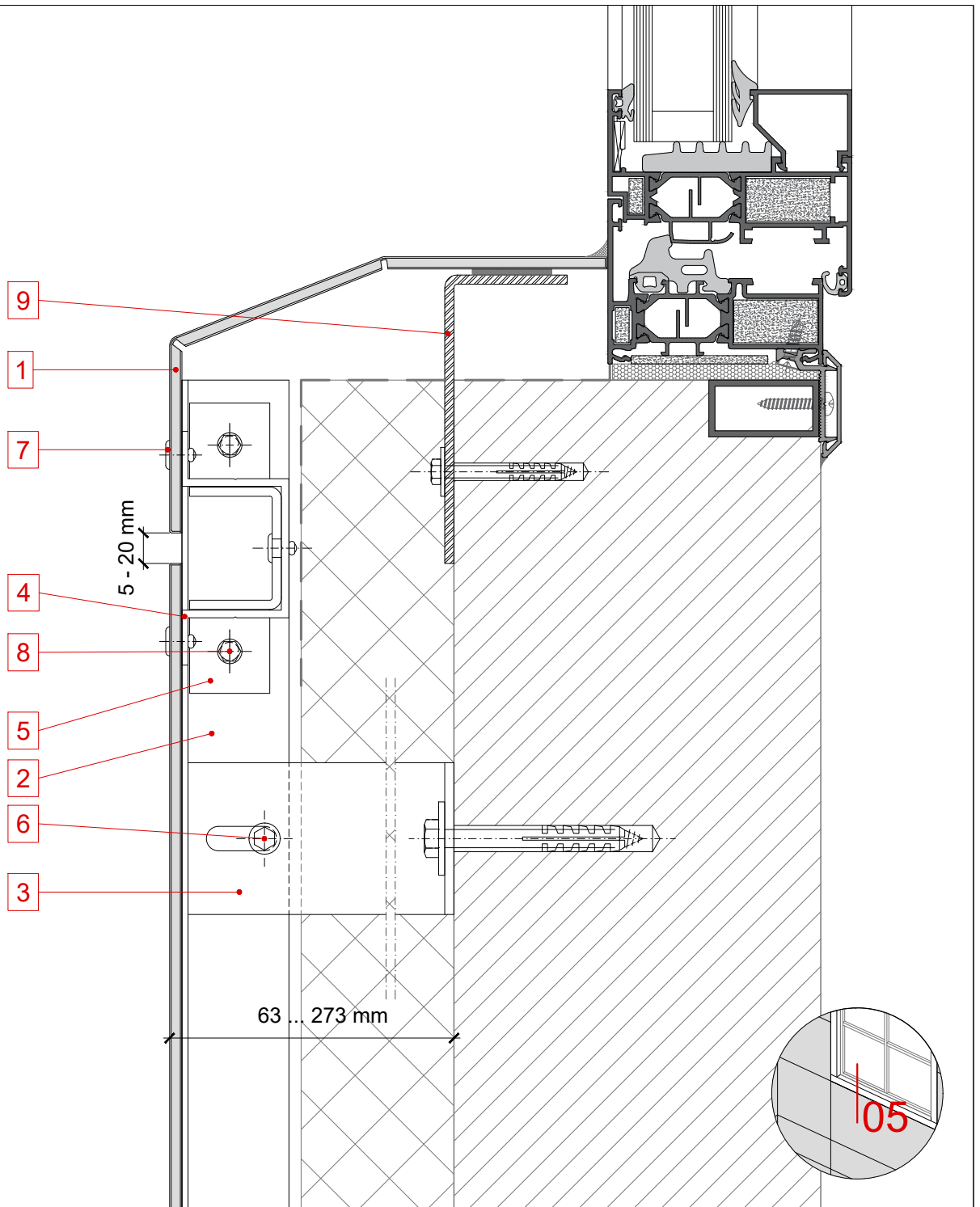
SECCIÓN VERTICAL

WINDOW SILL

# STAC BOND

REM..05.01

1:2 (A4)



1 STACBOND panel

2 Upright profile OMEGA

3 Spacer DOUBLE T

4 Crossbar profile OMEGA

5 Studs joining STB-REM

6 Tough screw M 6 x 60/70

7 Blind rivet

8 Self-drilling screw

9 Auxiliar profile

10 Water drainage holes

11 Aluminium plate for fixing and riveting

REV 08/18



# SYSTEM STB-REM

CONSTRUCTION DETAILS

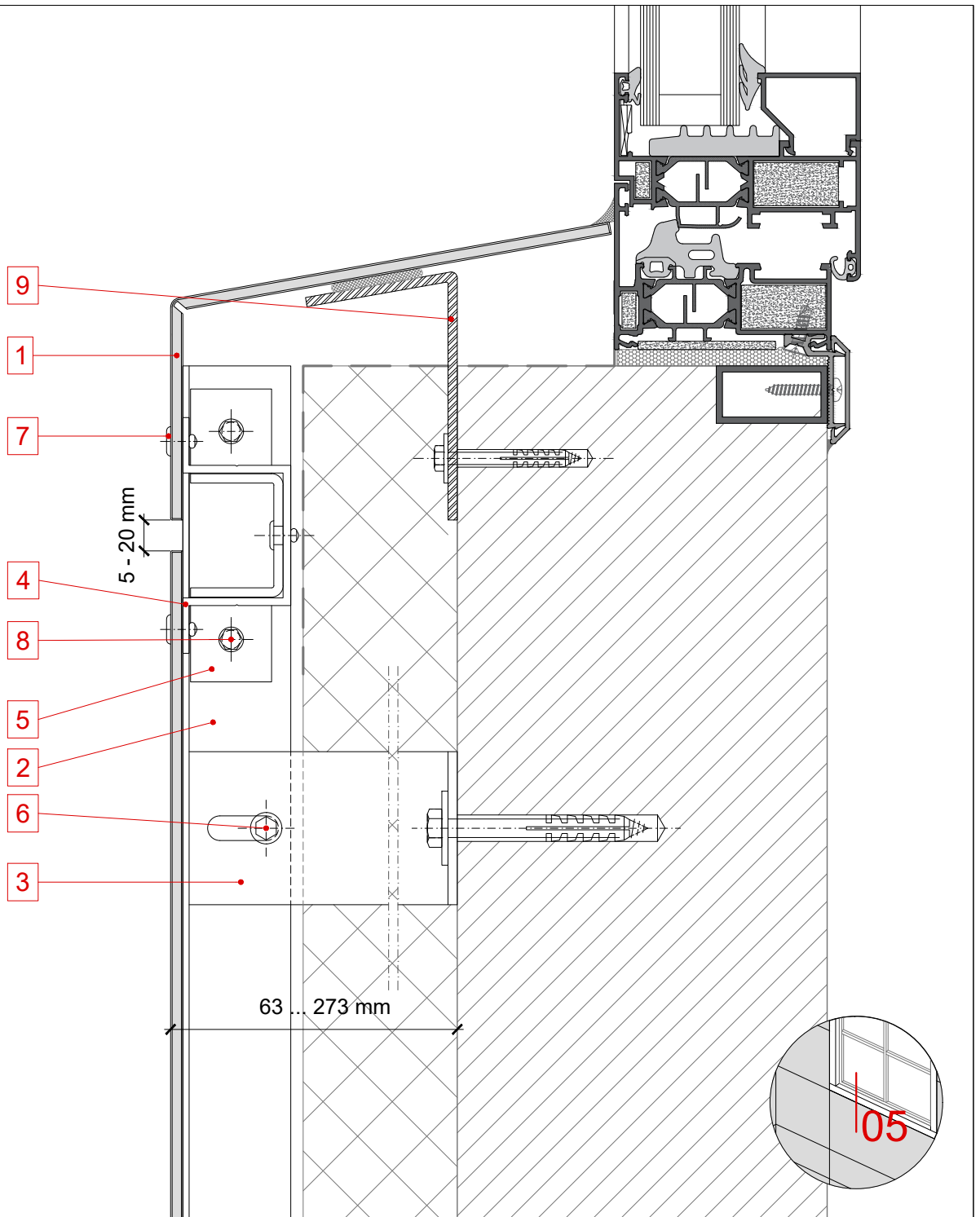
SECCIÓN VERTICAL

WINDOW SILL

# STAC BOND

REM..05.02

1:2 (A4)



1 STACBOND panel

2 Upright profile OMEGA

3 Spacer DOUBLE T

4 Crossbar profile OMEGA

5 Studs joining STB-REM

6 Tough screw M 6 x 60/70

7 Blind rivet

8 Self-drilling screw

9 Auxiliar profile

10 Water drainage holes

11 Aluminium plate for fixing and riveting

REV 08/18

# SYSTEM STB-REM

CONSTRUCTION DETAILS

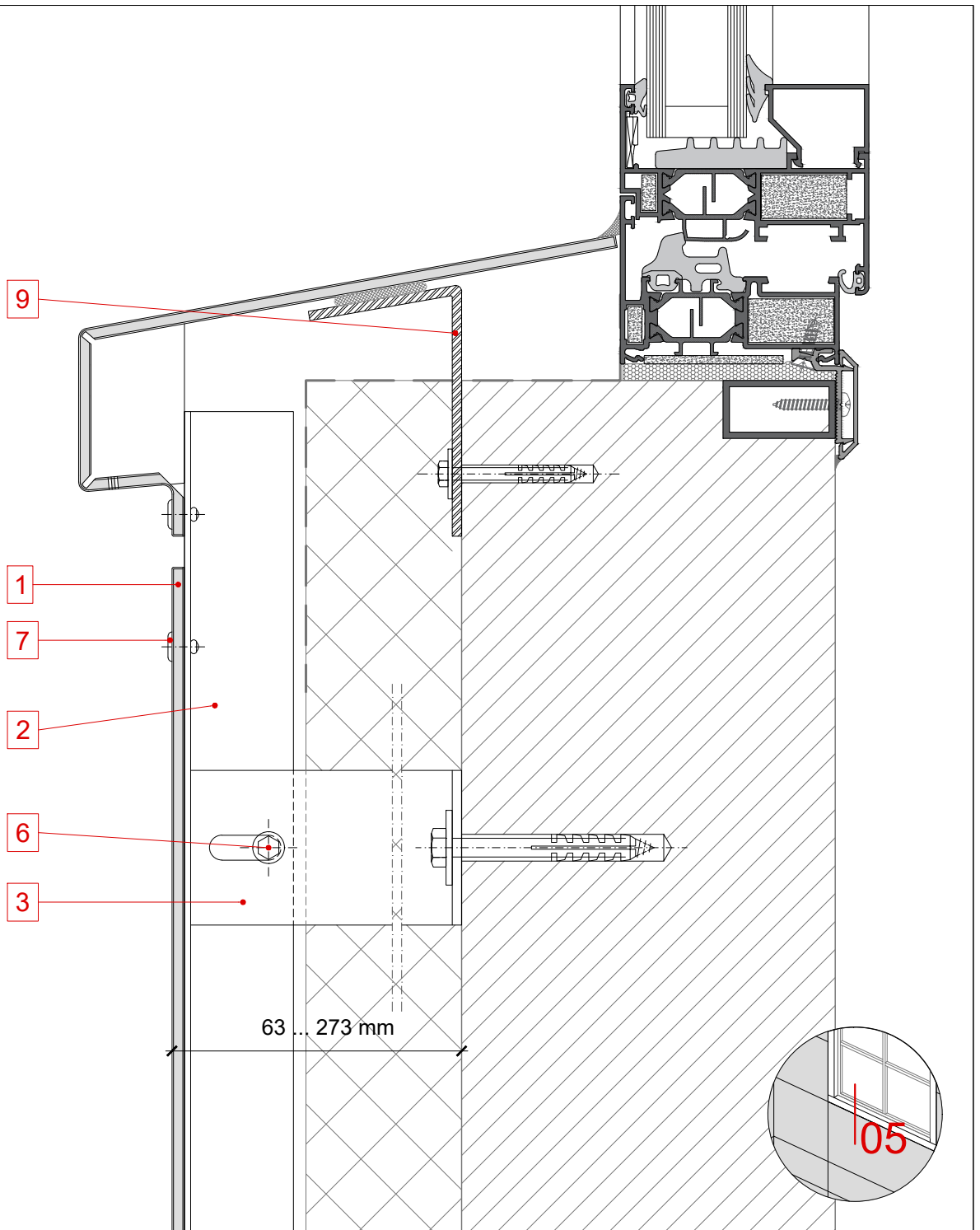
SECCIÓN VERTICAL

WINDOW SILL

# STAC BOND

REM..05.03

1:2 (A4)



1 STACBOND panel

2 Upright profile OMEGA

3 Spacer DOUBLE T

4 Crossbar profile OMEGA

5 Studs joining STB-REM

6 Through screw M 6 x 60/70

7 Blind rivet

8 Self-drilling screw

9 Auxiliar profile

10 Water drainage holes

11 Aluminium plate for fixing and riveting

REV 08/18

# SYSTEM STB-REM

CONSTRUCTION DETAILS

SECCIÓN VERTICAL

WINDOW SILL

# STAC BOND

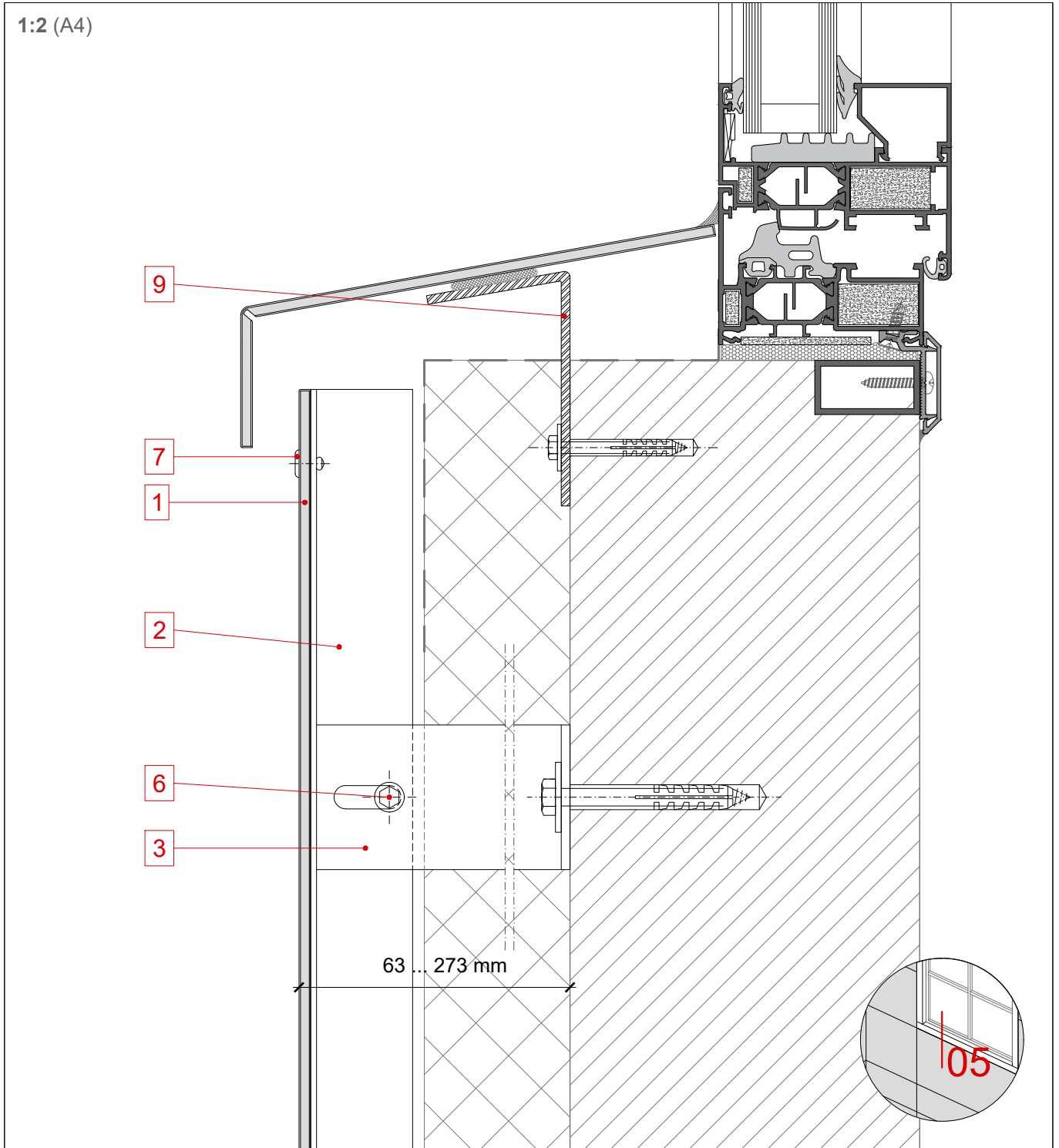
REM..05.04

1:2 (A4)

Any unauthorised reproduction, distribution, public communication and/or transformation of this document constitutes a copyright violation.

STAC® is not responsible for its use which is, in any case, intended for evaluation by technically skilled persons, and it is subject to their own discretion and risk.

This information is for conceptual use only, and it may change.



1 STACBOND panel

2 Upright profile OMEGA

3 Spacer DOUBLE T

4 Crossbar profile OMEGA

5 Studs joining STB-REM

6 Though screw M 6 x 60/70

7 Blind rivet

8 Self-drilling screw

9 Auxiliar profile

10 Water drainage holes

11 Aluminium plate for fixing and riveting

REV 08/18

# SYSTEM STB-REM

CONSTRUCTION DETAILS

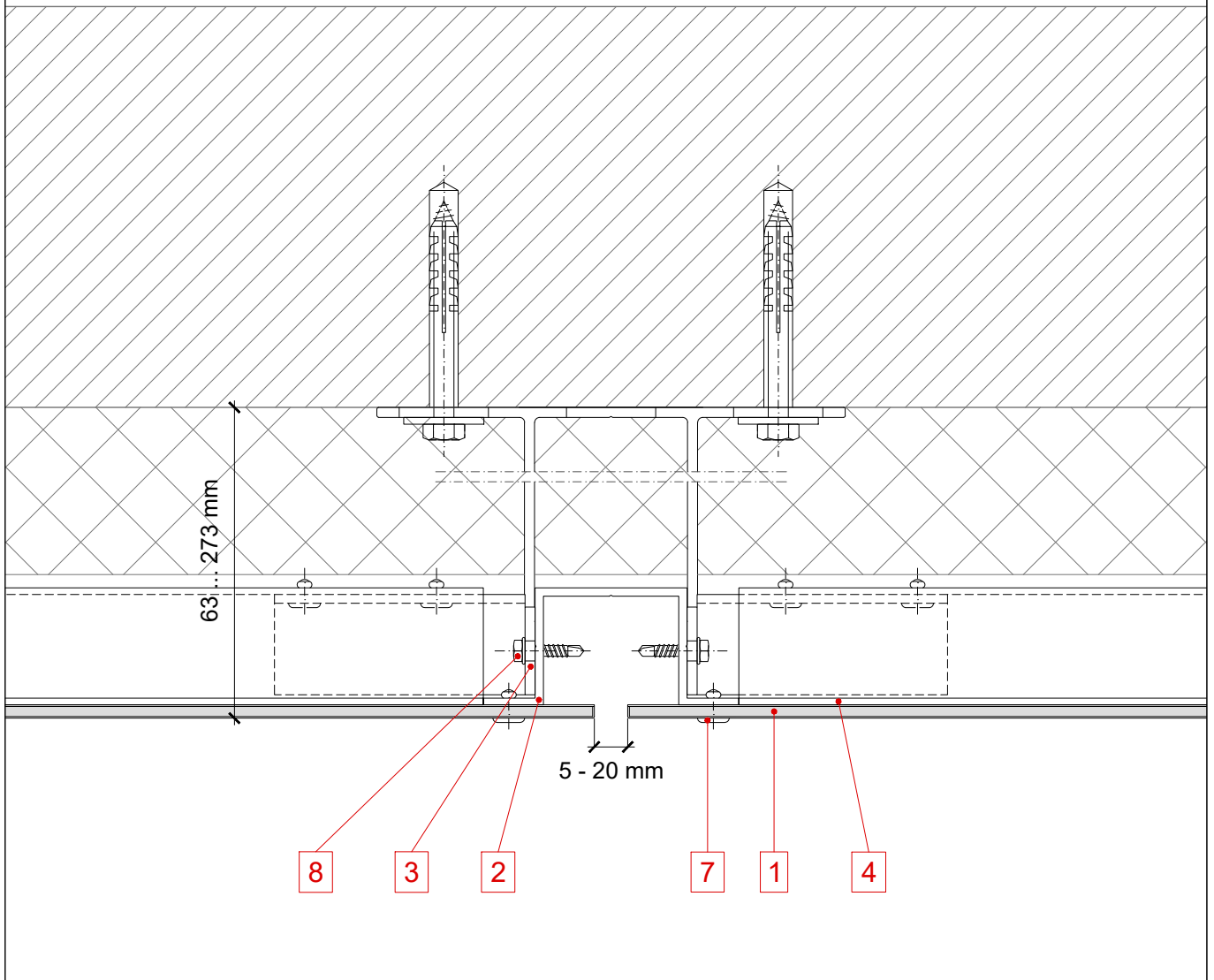
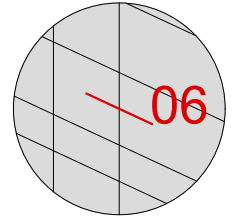
SECCIÓN HORIZONTAL

VERTICAL JOINT BIDIRECTIONAL

# STAC BOND

REM..06.01

1:2 (A4)



1 STACBOND panel

2 Upright profile OMEGA

3 Spacer DOUBLE T

4 Crossbar profile OMEGA

5 Studs joining STB-REM

6 Though screw M 6 x 60/70

7 Blind rivet

8 Self-drilling screw

9 Auxiliar profile

10 Water drainage holes

11 Aluminium plate for fixing and riveting

REV 08/18

# SYSTEM STB-REM

CONSTRUCTION DETAILS

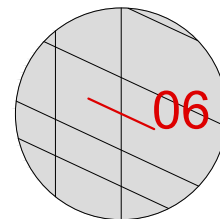
SECCIÓN HORIZONTAL

VERTICAL JOINT UNIDIRECTIONAL

# STAC BOND

REM..06.01

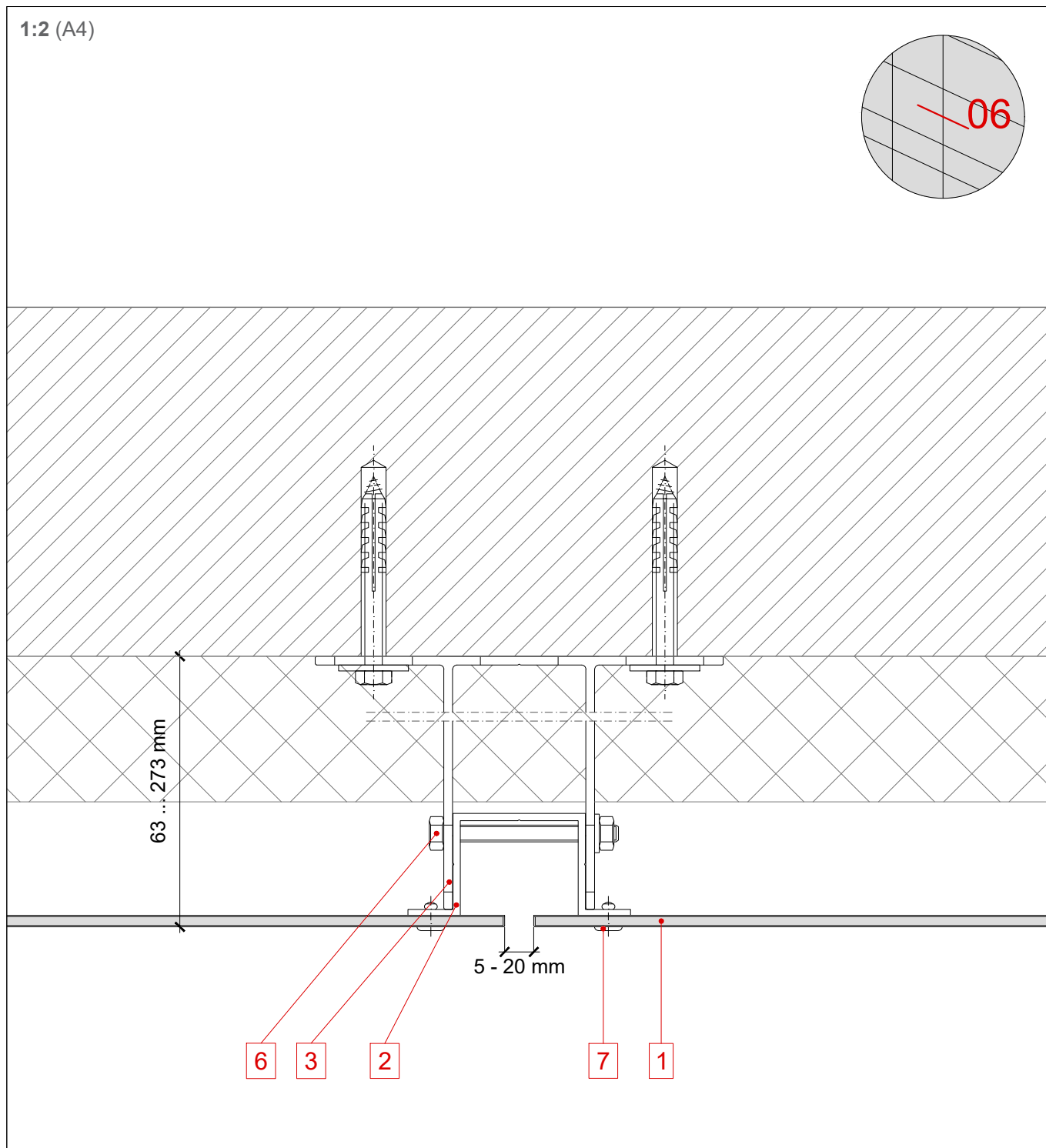
1:2 (A4)



Any unauthorised reproduction, distribution, public communication and/or transformation of this document constitutes a copyright violation.

STAC® is not responsible for its use which is, in any case, intended for evaluation by technically skilled persons, and it is subject to their own discretion and risk.

This information is for conceptual use only, and it may change.



1 STACBOND panel

2 Upright profile OMEGA

3 Spacer DOUBLE T

4 Crossbar profile OMEGA

5 Studs joining STB-REM

6 Though screw M 6 x 60/70

7 Blind rivet

8 Self-drilling screw

9 Auxiliar profile

10 Water drainage holes

11 Aluminium plate for fixing and riveting

REV 08/18

# SYSTEM STB-REM

CONSTRUCTION DETAILS

SECCIÓN HORIZONTAL

OUTER CORNER

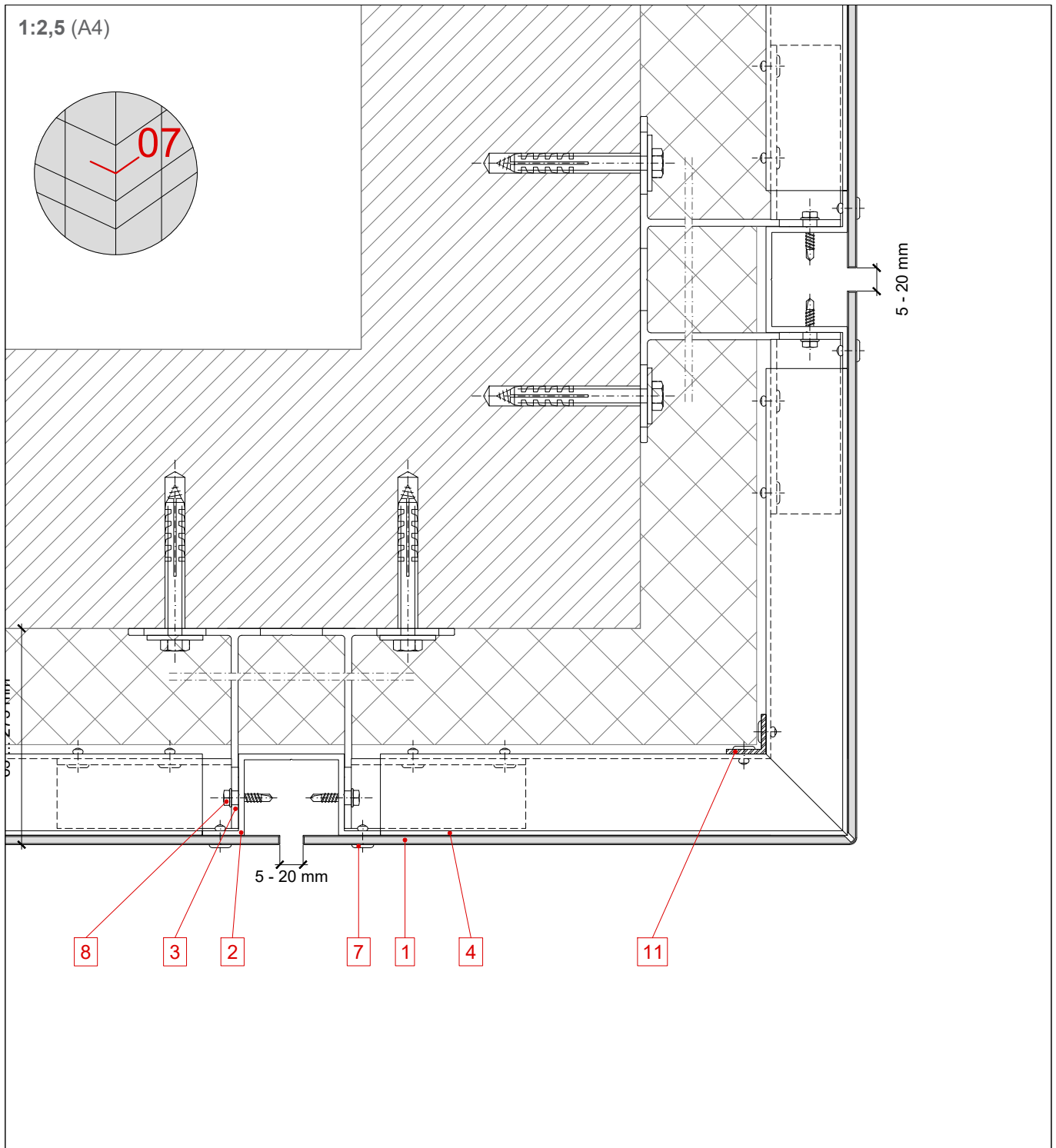
# STAC BOND

REM..07.01

Any unauthorised reproduction, distribution, public communication and/or transformation of this document constitutes a copyright violation.

STAC® is not responsible for its use which is, in any case, intended for evaluation by technically skilled persons, and it is subject to their own discretion and risk.

This information is for conceptual use only, and it may change.



1 STACBOND panel

2 Upright profile OMEGA

3 Spacer DOUBLE T

4 Crossbar profile OMEGA

5 Studs joining STB-REM

6 Though screw M 6 x 60/70

7 Blind rivet

8 Self-drilling screw

9 Auxiliar profile

10 Water drainage holes

11 Aluminium plate for fixing and riveting

REV 08/18

# SYSTEM STB-REM

CONSTRUCTION DETAILS

SECCIÓN HORIZONTAL

INNER CORNER

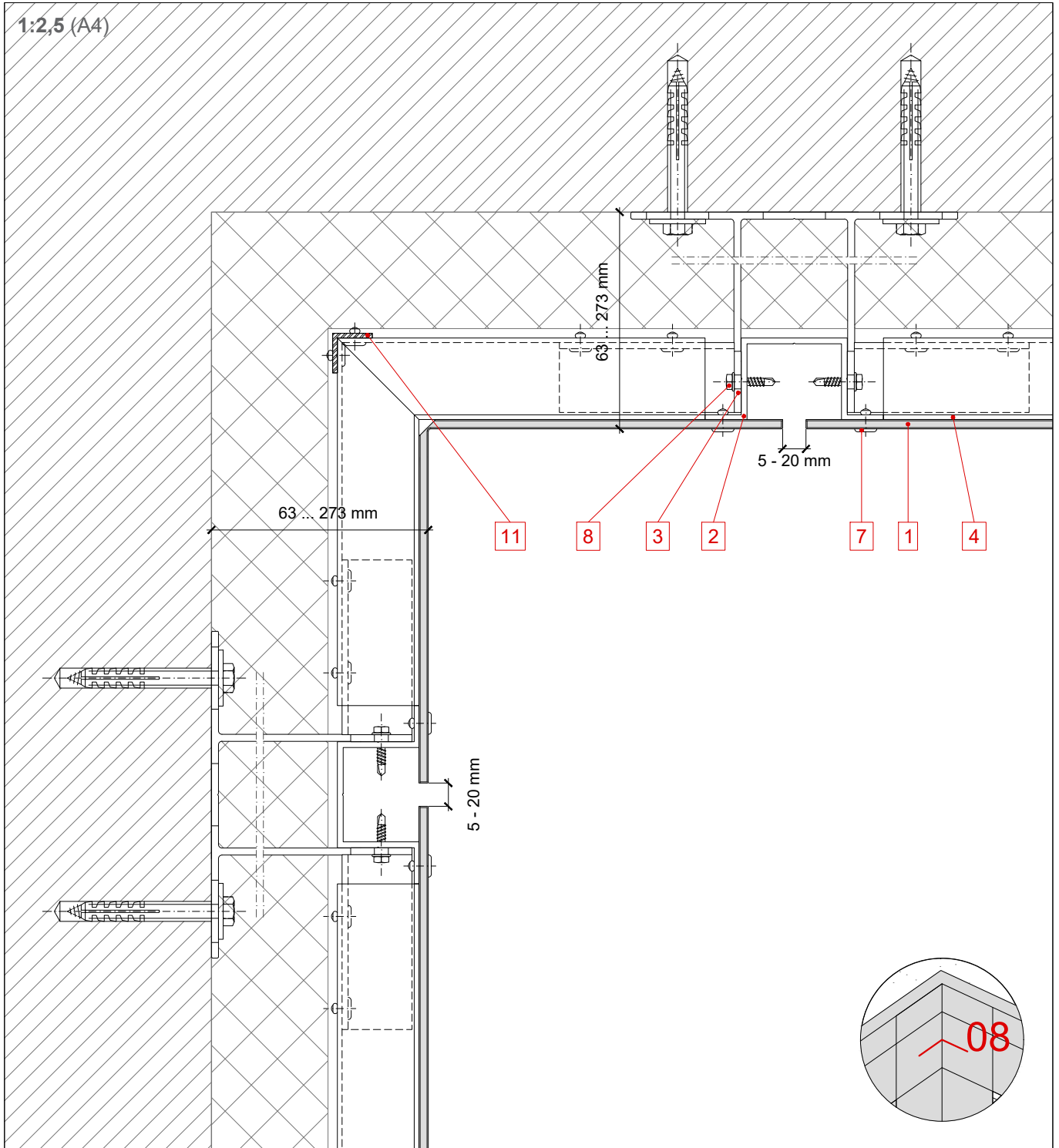
# STAC BOND

REM..08.01

Any unauthorised reproduction, distribution, public communication and/or transformation of this document constitutes a copyright violation.

STAC® is not responsible for its use which is, in any case, intended for evaluation by technically skilled persons, and it is subject to their own discretion and risk.

This information is for conceptual use only, and it may change.



1 STACBOND panel

2 Upright profile OMEGA

3 Spacer DOUBLE T

4 Crossbar profile OMEGA

5 Studs joining STB-REM

6 Tough screw M 6 x 60/70

7 Blind rivet

8 Self-drilling screw

9 Auxiliar profile

10 Water drainage holes

11 Aluminium plate for fixing and riveting

REV 08/18

# SYSTEM STB-REM

CONSTRUCTION DETAILS

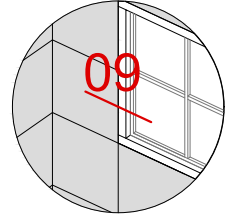
SECCIÓN HORIZONTAL

WINDOW JAMB

# STAC BOND

REM..09.01

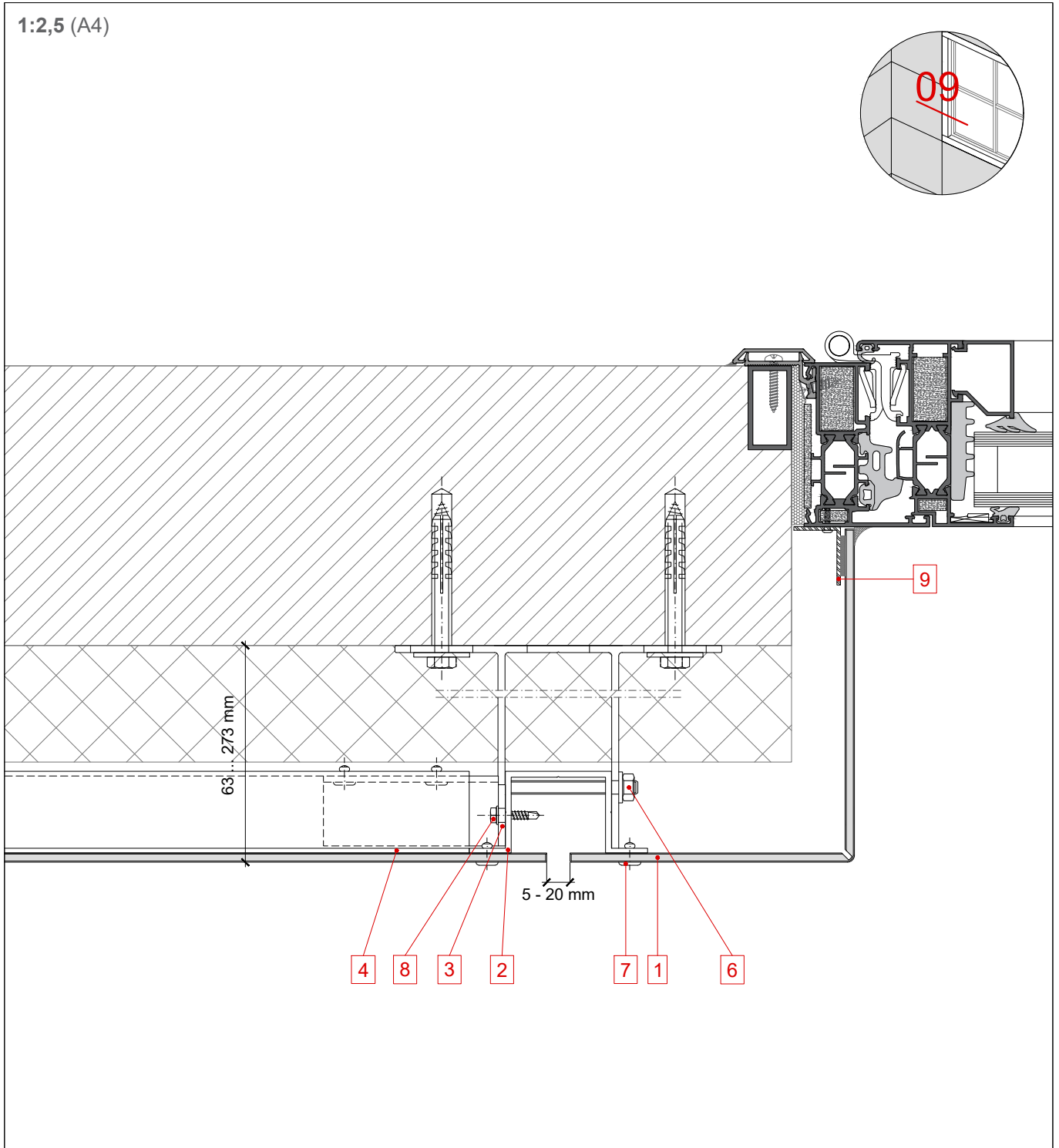
1:2,5 (A4)



Any unauthorised reproduction, distribution, public communication and/or transformation of this document constitutes a copyright violation.

STAC® is not responsible for its use which is, in any case, intended for evaluation by technically skilled persons, and it is subject to their own discretion and risk.

This information is for conceptual use only, and it may change.



1 **STACBOND** panel

2 Upright profile OMEGA

3 Spacer DOUBLE T

4 Crossbar profile OMEGA

5 Studs joining STB-REM

6 Though screw M 6 x 60/70

7 Blind rivet

8 Self-drilling screw

9 Auxiliar profile

10 Water drainage holes

11 Aluminium plate for fixing and riveting

REV 08/18



# SYSTEM STB-REM

CONSTRUCTION DETAILS

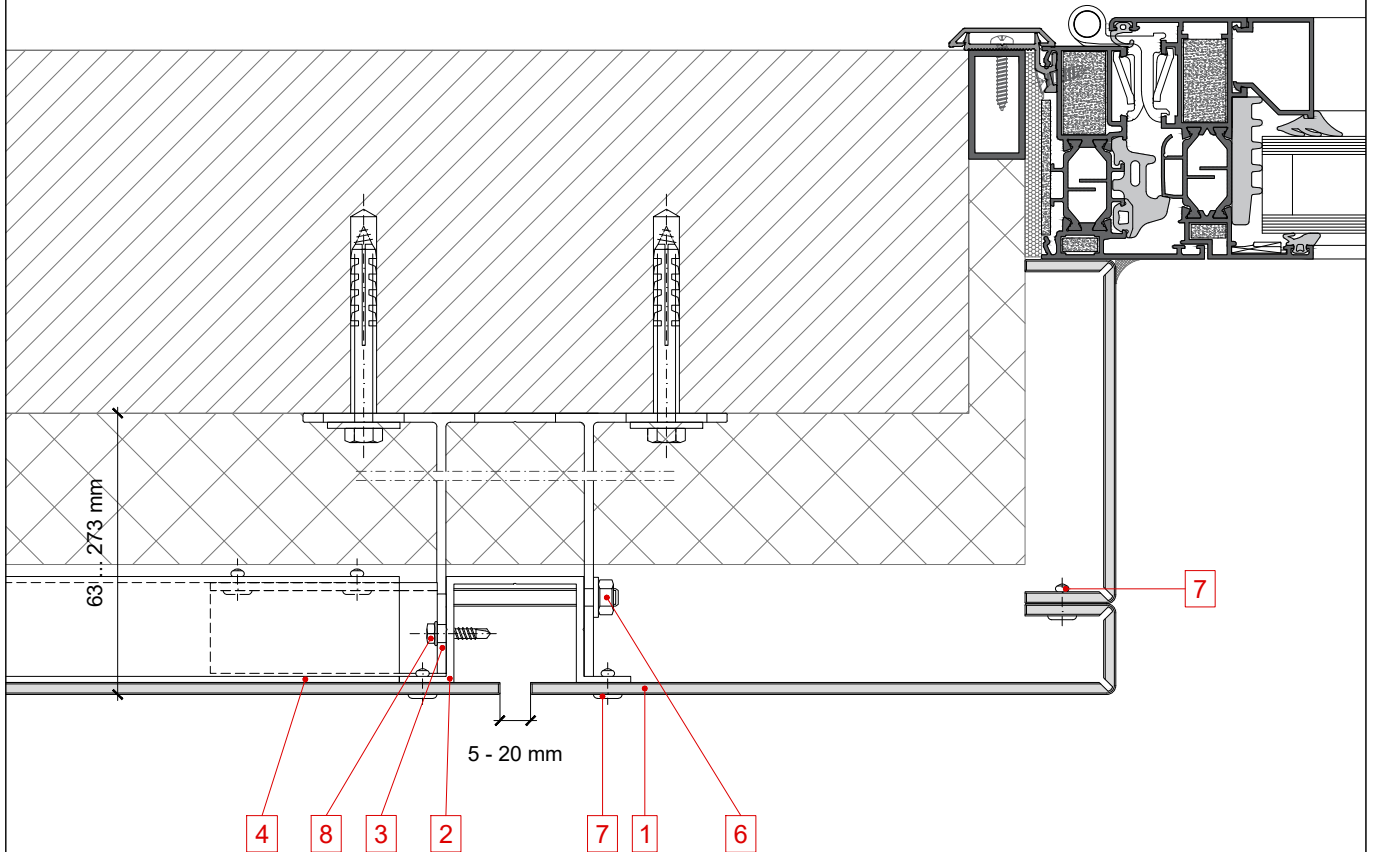
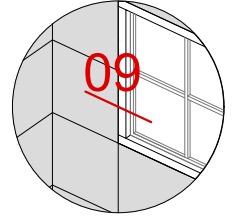
SECCIÓN HORIZONTAL

WINDOW JAMB

# STAC BOND

REM..09.02

1:2,5 (A4)



1 STACBOND panel

2 Upright profile OMEGA

3 Spacer DOUBLE T

4 Crossbar profile OMEGA

5 Studs joining STB-REM

6 Though screw M 6 x 60/70

7 Blind rivet

8 Self-drilling screw

9 Auxiliar profile

10 Water drainage holes

11 Aluminium plate for fixing and riveting

REV 08/18

# SYSTEM STB-REM

CONSTRUCTION DETAILS

SECCIÓN HORIZONTAL

ROUNDED CORNER

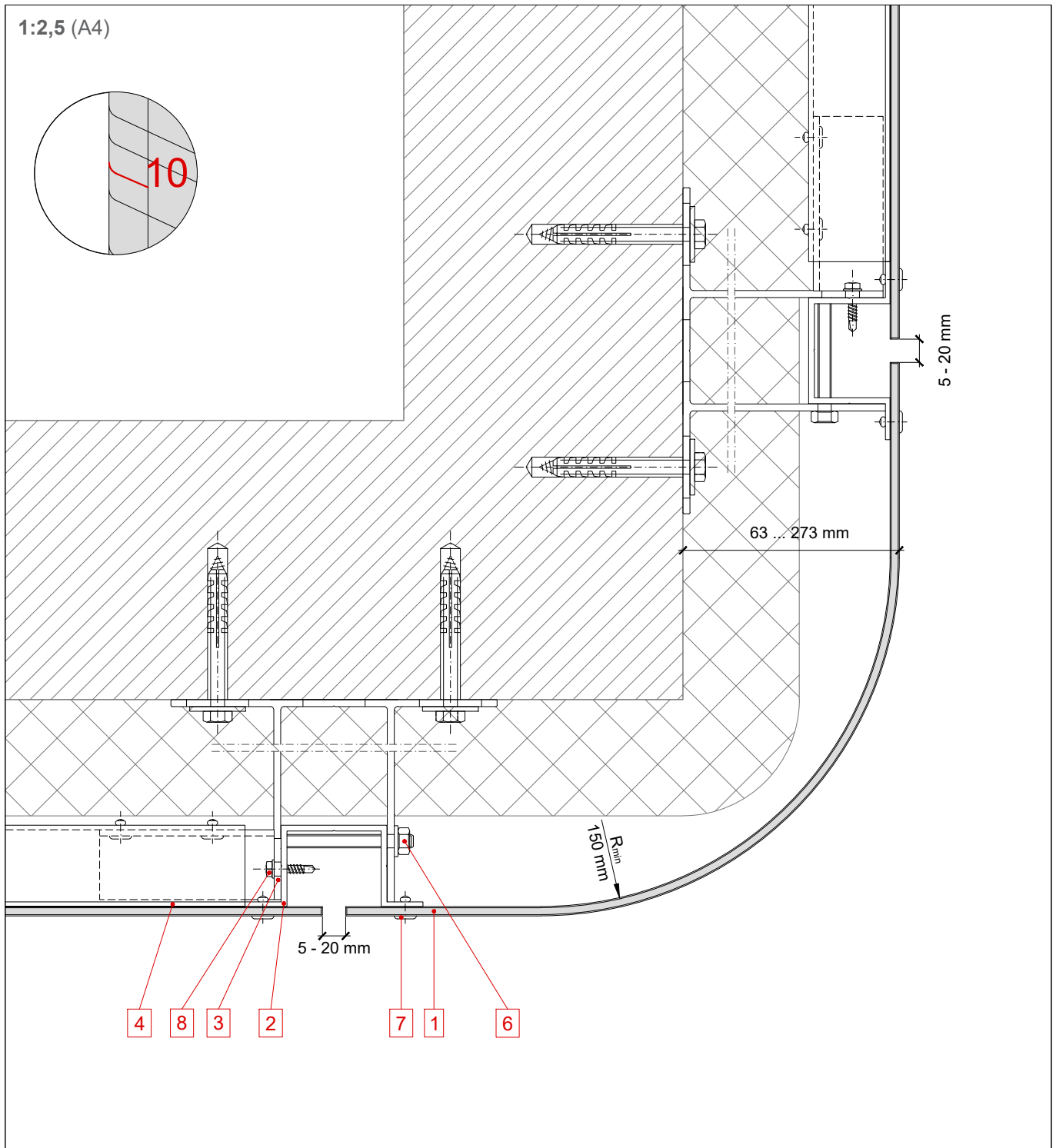
# STAC BOND

REM..10.01

Any unauthorised reproduction, distribution, public communication and/or transformation of this document constitutes a copyright violation.

STAC® is not responsible for its use which is, in any case, intended for evaluation by technically skilled persons, and it is subject to their own discretion and risk.

This information is for conceptual use only, and it may change.



1 STACBOND panel

2 Upright profile OMEGA

3 Spacer DOUBLE T

4 Crossbar profile OMEGA

5 Studs joining STB-REM

6 Though screw M 6 x 60/70

7 Blind rivet

8 Self-drilling screw

9 Auxiliar profile

10 Water drainage holes

11 Aluminium plate for fixing and riveting

REV 08/18

# SYSTEM STB-REM

CONSTRUCTION DETAILS

SECCIÓN VERTICAL

LATERAL CLADDING END

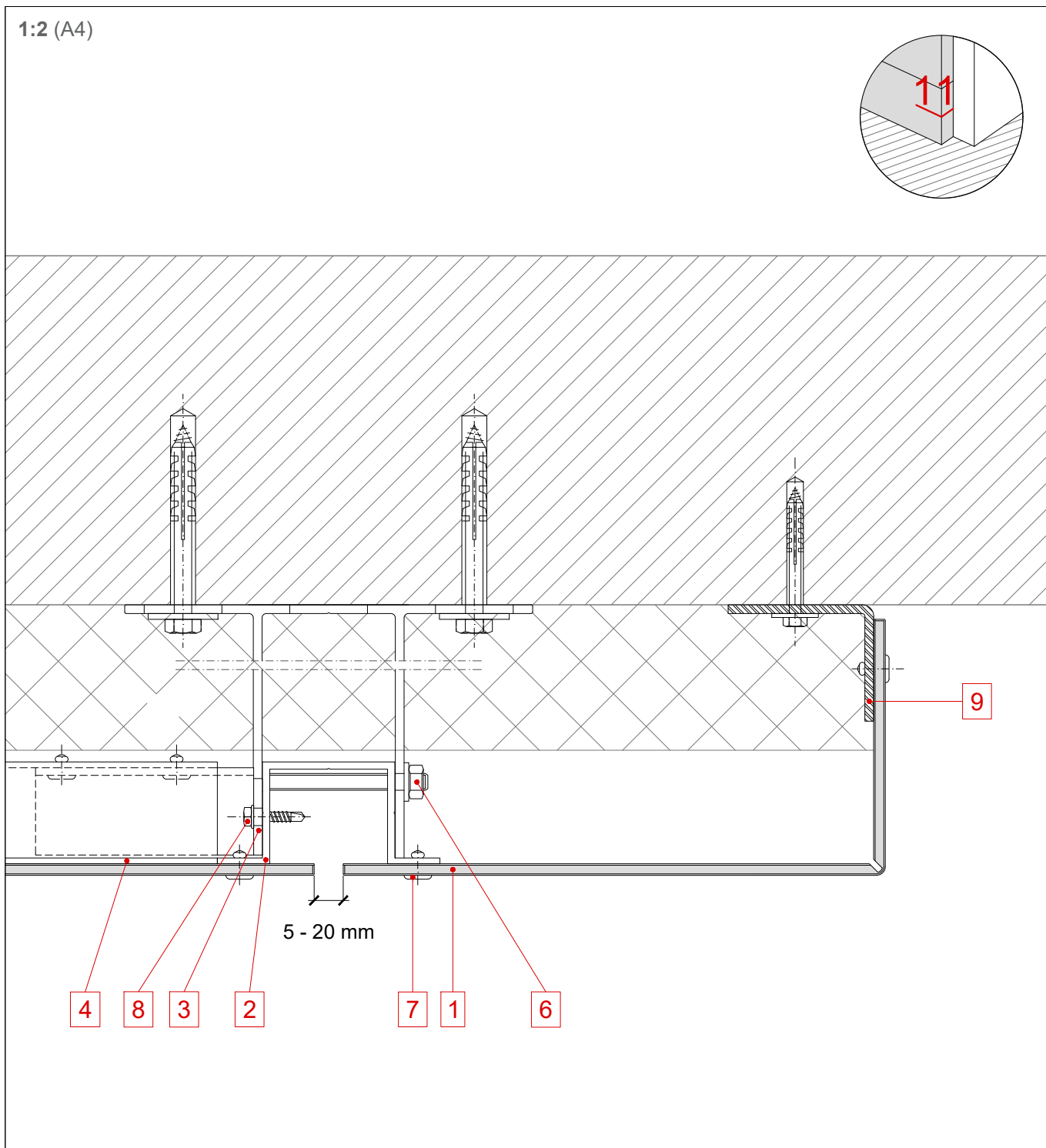
# STAC BOND

REM..11.01

Any unauthorised reproduction, distribution, public communication and/or transformation of this document constitutes a copyright violation.

STAC® is not responsible for its use which is, in any case, intended for evaluation by technically skilled persons, and it is subject to their own discretion and risk.

This information is for conceptual use only, and it may change.



1 STACBOND panel

2 Upright profile OMEGA

3 Spacer DOUBLE T

4 Crossbar profile OMEGA

5 Studs joining STB-REM

6 Tough screw M 6 x 60/70

7 Blind rivet

8 Self-drilling screw

9 Auxiliar profile

10 Water drainage holes

11 Aluminium plate for fixing and riveting

REV 08/18

# SYSTEM STB-REM

## CONSTRUCTION DETAILS

### SECCIÓN VERTICAL

#### CEILING

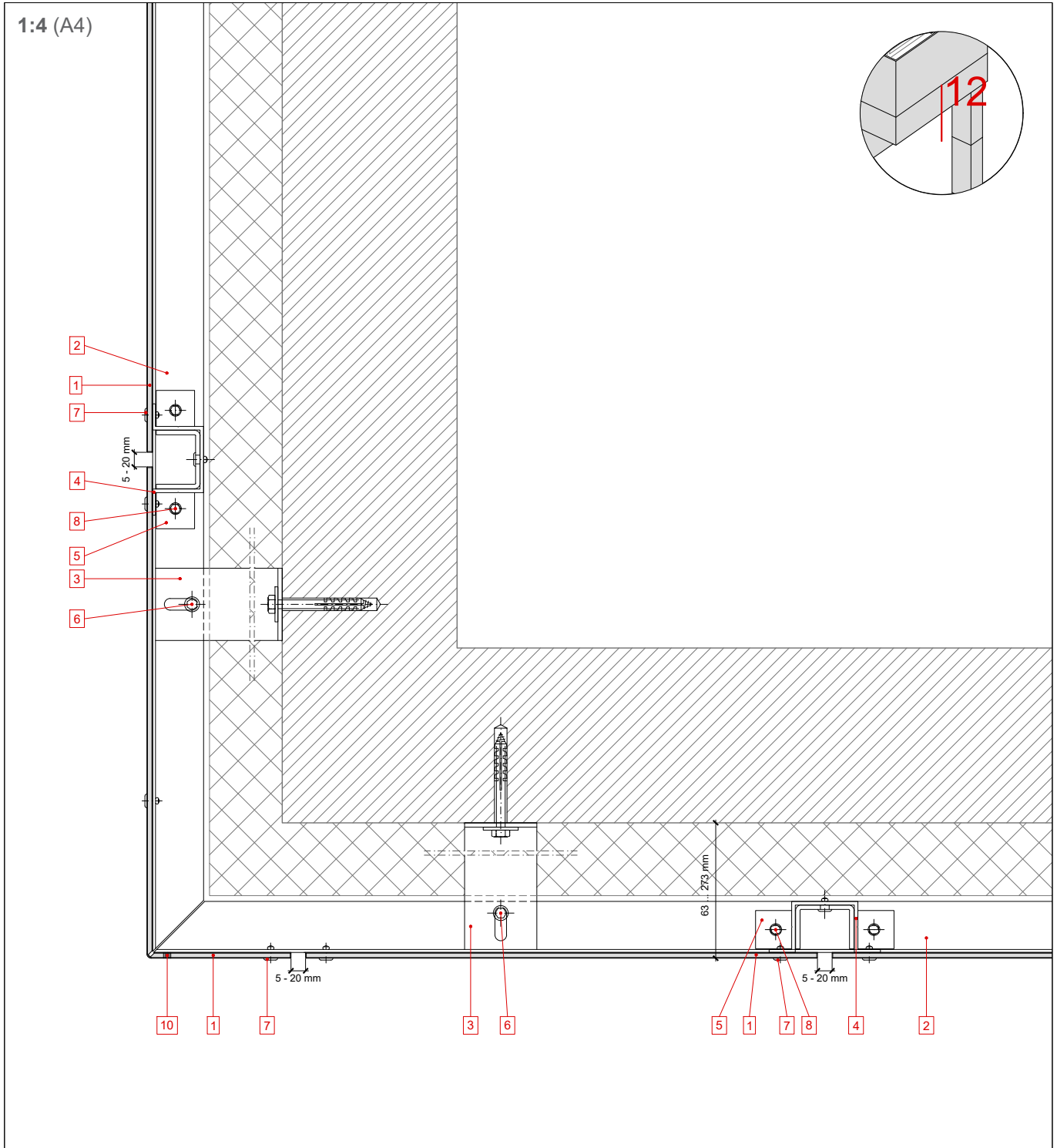
# STAC BOND

REM..12.01

Any unauthorised reproduction, distribution, public communication and/or transformation of this document constitutes a copyright violation.

STAC® is not responsible for its use which is, in any case, intended for evaluation by technically skilled persons, and it is subject to their own discretion and risk.

This information is for conceptual use only, and it may change.



1 STACBOND panel

2 Upright profile OMEGA

3 Spacer DOUBLE T

4 Crossbar profile OMEGA

5 Studs joining STB-REM

6 Though screw M 6 x 60/70

7 Blind rivet

8 Self-drilling screw

9 Auxiliar profile

10 Water drainage holes

11 Aluminium plate for fixing and riveting

REV 08/18