

STACBOND

SOLID & METALLIC
FINISHES

stacbond.com

Aluminium Coil Coating & Composite Panels

STACBOND

Fire Resistant Aluminum Composite panel

The STACBOND composite panel consists of a fire-resistant core and two sheets of 5005/3005 aluminium alloy, coated with the highest quality paint for superior resistance to ageing.

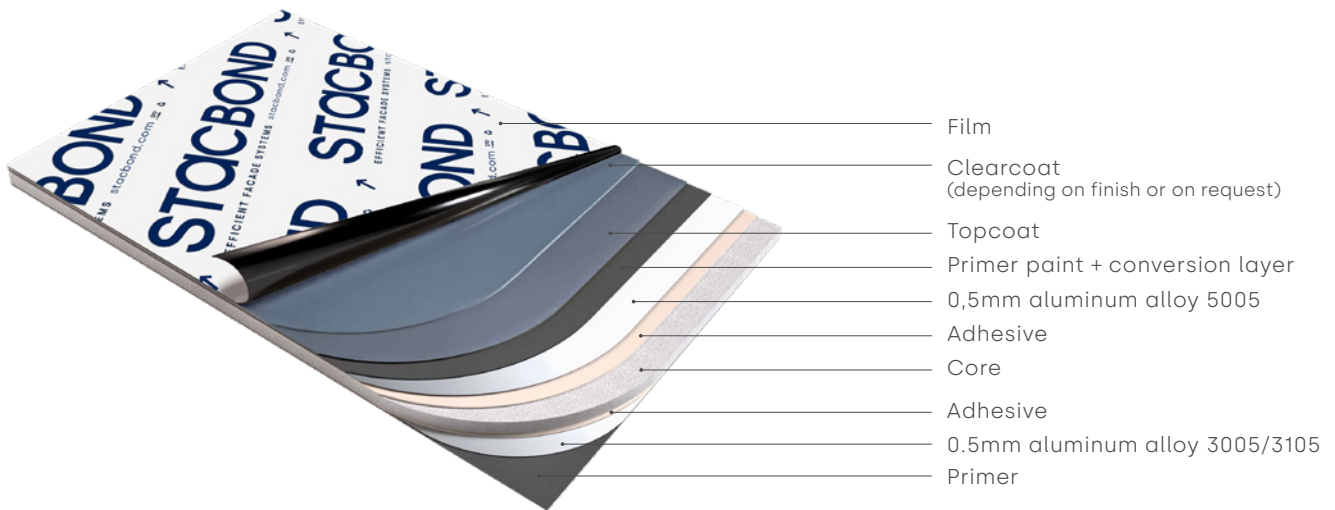
Its versatility allows for various machining techniques, such as milling, bending or punching, which expand creative and design options, making it a safe, durable and flexible solution for façades, cladding and interiors.

El panel composite STACBOND, está formado por un núcleo resistente al fuego y dos láminas de aluminio de aleación 5005/3005, recubiertas con pintura de la máxima calidad para una resistencia superior al envejecimiento.

Su versatilidad permite diversas técnicas de mecanizado, como fresado, curvado o punzonado que amplían las opciones creativas y de diseño, convirtiéndolo en una solución segura, duradera y flexible para fachadas, revestimientos e interiores.

Le panneau composite STACBOND est composé d'un noyau résistant au feu et de deux feuilles d'aluminium en alliage 5005/3005, recouvertes d'une peinture de la plus haute qualité pour une résistance supérieure au vieillissement.

Sa polyvalence permet diverses techniques d'usinage, telles que le fraisage, le cintrage ou le poinçonnage, qui élargissent les options créatives et de conception, ce qui en fait une solution sûre, durable et flexible pour les façades, les revêtements et les intérieurs.



- Film
- Clearcoat (depending on finish or on request)
- Topcoat
- Primer paint + conversion layer
- 0,5mm aluminum alloy 5005
- Adhesive
- Core
- Adhesive
- 0.5mm aluminum alloy 3005/3105
- Primer

Environmental certificates

COUNTRY	NORM / CERTIFICATE	BODY	STACBOND A2	STACBOND FR
INTERNATIONAL	EPD S-P-01289	Environdec Sweden	✓	✓
INTERNATIONAL	LEED 2014	USGBC	✓	✓
INTERNATIONAL	ISO 14001	Bureau Veritas	✓	✓
INTERNATIONAL	ZERO WASTE	Bureau Veritas	✓	✓



Anodized look finishes



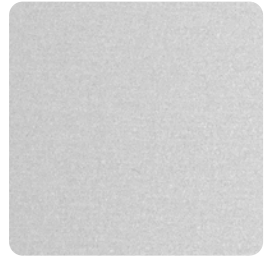
Anodic Shade
STB-4B3



Anodic Dark
STB-E03



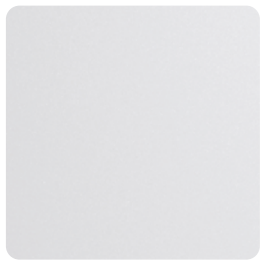
Anodic Light
STB-E02



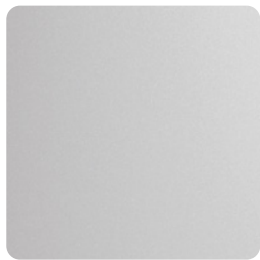
Anodic Clear
STB-588 [NEW]



Metallic finishes



White Metallic
STB-400



Champagne Metallic
STB-405



Titanium Metallic
STB-407



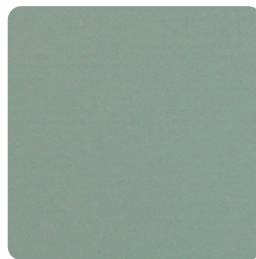
Grey Metallic
STB-402



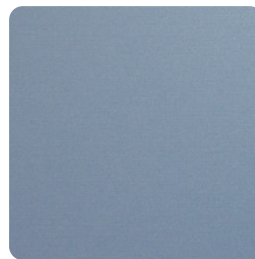
Silver Metallic
STB-403



Bronze Metallic
STB-406



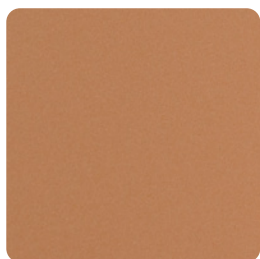
Jade Green
STB-410



Blue Metallic
STB-409



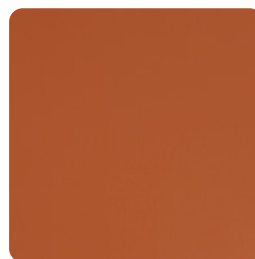
Gold Metallic
STB-454



Copper Metallic
STB-414



Intense Copper
STB-4D7



Terracotta
STB-450



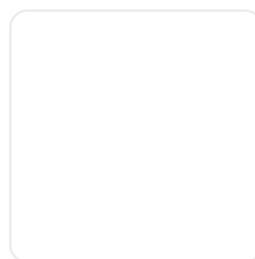
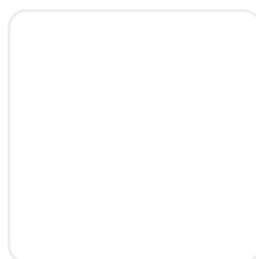
Carbon
STB-408



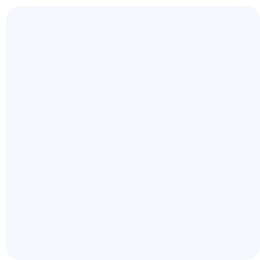
Dark Grey
STB-483



Black Stardust
STB-589 **[NEW]**



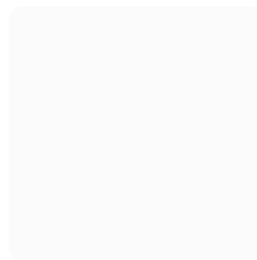
Solid finishes



Arctic White
STB-401



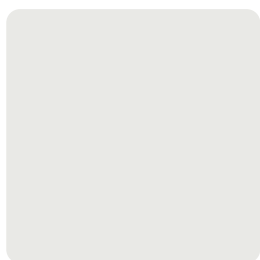
Traffic White
STB-413



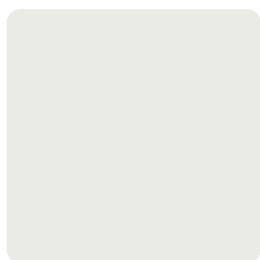
Signal White
STB-459



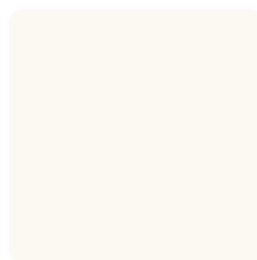
Pure White
STB-420



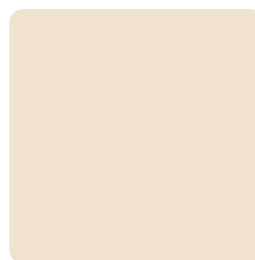
Light Grey
STB-439



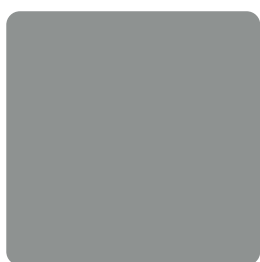
Grey White
STB-492



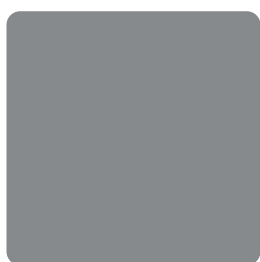
Cream
STB-455



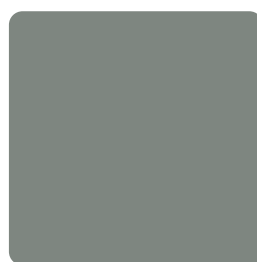
Ivory
STB-485



Autumn Grey
STB-565 **[NEW]**



Dusty Grey
STB-4A5



Mouse Grey
STB-458



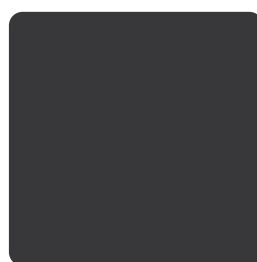
Iron Grey
STB-469



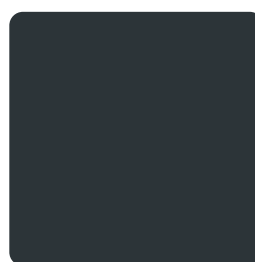
Umbra Grey
STB-417



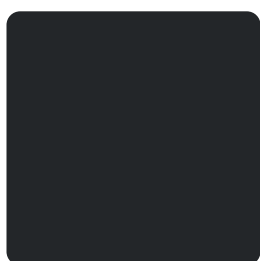
Graphite Grey
STB-4E3



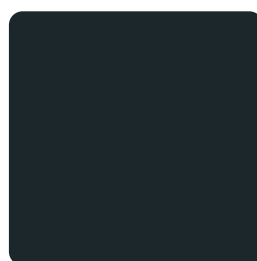
Charcoal
STB-4X5 **[NEW]**



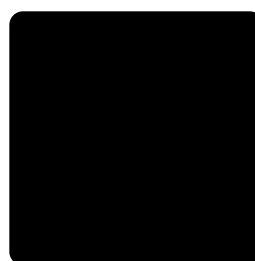
Anthracite Grey
STB-478



Twilight Bronze
STB-564 **[NEW]**



Black Grey
STB-451



Black
STB-415

Solid finishes



Natural Blue
STB-430



Yellow Green
STB-484



Traffic Yellow
STB-493



Traffic Red
STB-411



Ultramarine Blue
STB-412



Dark Green
STB-487



Orange
STB-495



Blood Red
STB-498



Steel Blue
STB-473



Grey Brown
STB-4C6 [NEW]



Brown
STB-494



Deep Red
STB-488

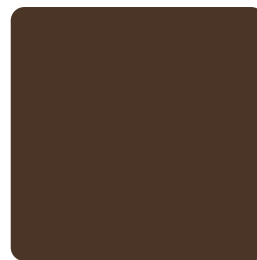
Ultramatt finishes



Ultramatt Black
STB-425



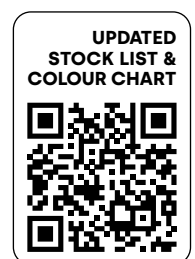
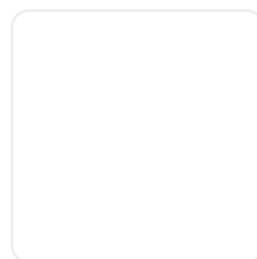
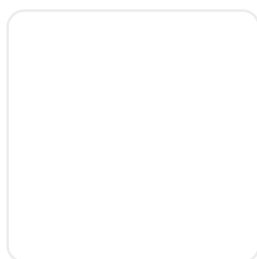
Bottle Green Matt
STB-U03 [NEW]



Brown Matt
STB-U02 [NEW]



Duron Maroon Matt
STB-U04 [NEW]



UPDATED
STOCK LIST &
COLOUR CHART

STACBOND

more than you see

stacbond.com

Eco Bierzo Composite S.L. | info@stacbond.es | +34 987 553 117